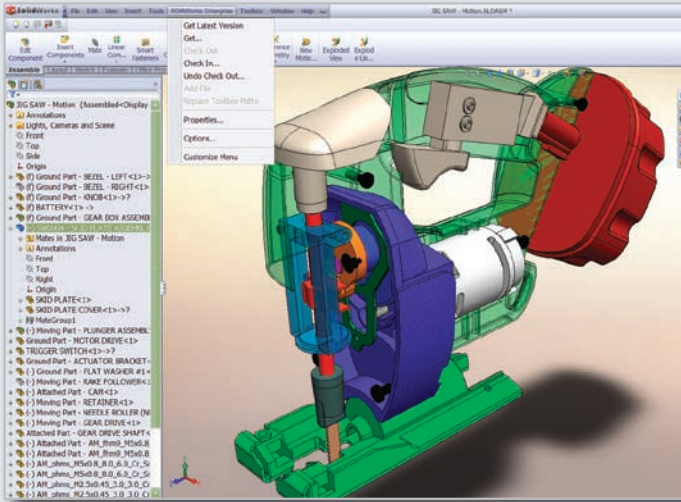


SolidWorks Enterprise PDM Quick Start Program

THE FASTEST WAY TO IMPLEMENT PRODUCT DATA MANAGEMENT



	Days	1	2	3	4	5
Getting Overview	0.25					
Installation Clients	0.5					
Training	1					
Configuration	1					
Integration and Migration	0.5					
Training for Support	0.75					
Support & Maintenance	1					
Total Estimated Time	5 Days					

The SolidWorks Enterprise PDM Quick Start Program is an accelerated planning methodology for successfully implementing the SolidWorks Enterprise PDM product data management solution. The SolidWorks Enterprise PDM system can help your organization to manage, find, share, and re-use your valuable product design data throughout your entire organization.

The first step in utilizing PDM to get quality products to market faster and at lower cost is to evaluate and choose a PDM solution that meets your organization's requirements. After you have selected the right system for your enterprise, establishing an effective plan for immediate implementation is critically important to your long-term success. The SolidWorks® Enterprise PDM Quick Start Program offers valuable guidelines and tools for implementing a PDM solution.

Ensure a fast implementation with the SolidWorks Enterprise PDM Quick Start Program

The SolidWorks Enterprise PDM Quick Start Program is a proven implementation system that uses industry-standard best practices to enable your company to smoothly and efficiently launch your PDM system, so you can realize the benefits of product data management in the shortest amount of time.

The SolidWorks Enterprise PDM Quick Start Program provides:

- A consistent, proven methodology for implementing PDM software
- Set-up and information systems recommendations
- Technical reference tools
- Materials to help document the implementation

System Requirements

- Database File Server – to house the data used to search for documents.
- Archive File Server – to store documents in a central vault, which may be shared with a database server.
- Client Workstations – to access the secure vault using CAD Editor, Contributor, or Viewer Access client.

System Requirements

- Microsoft® SQL Server™ 2005 Standard Edition
- Archive Server
- Replicated Server(s)
- Microsoft Business Intelligence Development Studio (Reporting)
- Client Software
- CAD Integrations include:
 - AutoCAD®
 - Inventor®
 - SolidWorks
 - Solid Edge®
 - Pro/ENGINEER®
- Microsoft Windows® Explorer Integration
- Application Programming Interface (API)

SolidWorks Enterprise PDM Quick Start Program Benefits

- Increased reuse of existing designs
- Better communication between departments
- Elimination of data lost through overwriting
- Reduced number of engineering change orders (ECOs)

SolidWorks Enterprise PDM Quick Start items include:

- Secure Vault
- Check In/Check Out
- Revision Control
- Version Control
- Workflow Process
- Viewing
- Searching
- Where Used?
- Contains
- Bill of Materials (BOM)

Implement PDM in a matter of days

A SolidWorks Enterprise PDM Quick Start implementation can take as little as five (5) days. Additional time may be required for planning, acquiring hardware, advanced training, and enhanced capabilities.

Tips for transferring legacy data

Bulk data loading or import of existing data are not part of the SolidWorks Enterprise PDM Quick Start Program, which begins with an empty vault and training on how to easily drag and drop existing data on demand into the secure vault. You can transfer only the legacy data you need into the vault, so data transfers do not delay your ability to reap benefits from your PDM system. You will also learn how to start new projects and documents using the vaulting system.

Accelerate return on your PDM investment

The SolidWorks Enterprise PDM Quick Start Program allows you to begin with a proven and stable platform that will accrue a fast return on investment (ROI) on your PDM purchase. The SolidWorks Enterprise PDM Quick Start Program is fully customizable and flexible so you can start realizing ROI immediately and add more functionality over time. Once you have your PDM system up and running, you can gain additional efficiencies through:

- Legacy Data Migration
- Advanced Bill of Material Management
- ERP Integration
- PLM Integration
- Advanced Workflow Processes
- Remote Web Access

Produce an effective PDM implementation plan

Your local value-added reseller (VAR) or service partner will work with you to help plan and coordinate the resources required for the successful use of the SolidWorks Enterprise PDM Quick Start Program.

Task	Days	1	2	3	4	5
Kick Off Meeting	0.25	█				
Implementation Overview	0.25	█				
Software Installation Servers and Clients	0.5	█	█			
Basic Admin Training	1	█	█	█		
System Configuration	1		█	█	█	
System Validation and Documentation	0.5				█	
End User Training Over-the-Shoulder Support	0.75				█	█
Go Live, On-Site Support & Documentation	1					█
Total Estimated Time	5 Days					

Typical five-day implementation timeline



Dassault Systèmes SolidWorks Corp.
 300 Baker Avenue
 Concord, MA 01742 USA
 Phone: 1 800 693 9000
 Outside the US: +1 978 371 5011
 Email: info@solidworks.com
 www.solidworks.com