

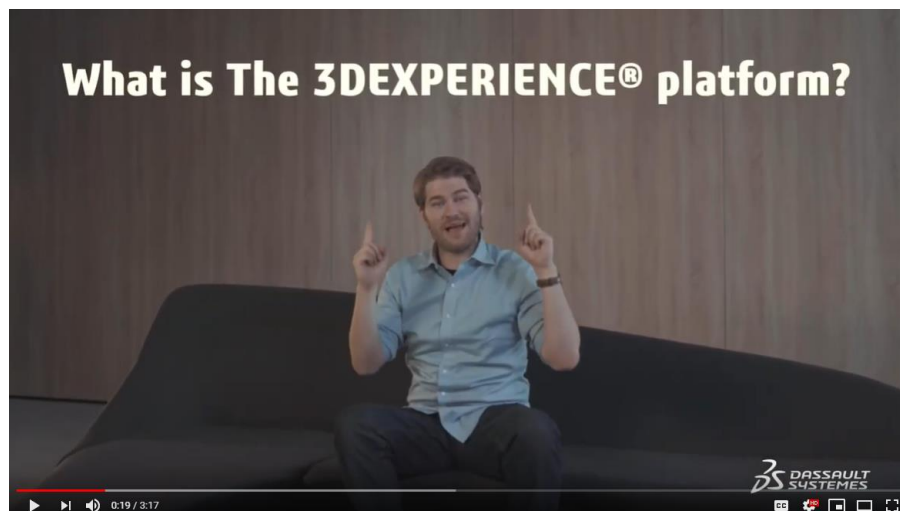
SOLIDWORKS® Student Edition 2020-2021

If you already have a [SOLIDWORKS ID](#) (MySolidWorks account), you **MUST** use that email & password to sign into your 3DEXPERIENCE Platform! In this case, you do not need to create a separate 3DEXPERIENCE account.

Thank you for purchasing the **SOLIDWORKS Student Edition 2020-2021**. In addition to the full SOLIDWORKS Desktop suite of products, your purchase also includes a free 1-year trial of the **3DEXPERIENCE Platform** – our next-gen suite of collaborative cloud tools and apps.

This important document is broken up into two sections. We strongly suggest that you read through **both** sections before installing/using any software:

- 1) **SOLIDWORKS Student Edition 2020-2021:** This product bundle includes our full product portfolio of industry-standard design and engineering tools.
- 2) **3DEXPERIENCE Platform:** The 3DEXPERIENCE Platform is a brand new, next-generation design and collaboration platform, all on the cloud. To get a better understanding of what the 3DEXPERIENCE Platform can do, you can watch this short video:



SOLIDWORKS Student Edition 2020-2021 Information:

The **Student Edition** contains:

- SOLIDWORKS **Premium** (3D CAD software)
- SOLIDWORKS **Simulation Premium** (FEA tools)
- SOLIDWORKS **Flow Simulation** (CFD tools)
- SOLIDWORKS **Motion** (kinematics analysis)
- SOLIDWORKS **Plastics** (part and mold filling analysis)
- SOLIDWORKS **Sustainability** (environmental impact tools)
- SOLIDWORKS **Electrical Professional** (electrical systems design tools)
- SOLIDWORKS **Model-Based Definition** (define, organize, and publish 3D PMI)
- SOLIDWORKS **Composer** (technical documentation tools)
- SOLIDWORKS **Visualize** (develop rich, photo quality content and VR content)
- SOLIDWORKS **CAM Pro** (fully integrated, knowledge-based CAM system)
- Free access to **MySolidWorks** Student (video tutorials, assessments, and much more)
- **CSWA** and **CSWP** Certification Voucher

Please use the Student Edition serial number that came with your purchase for installation:

- Your SOLIDWORKS CAD serial number begins with 9020...
 - This Serial Number activates all the products that are listed above. Unlike in prior releases, you do not need additional serial numbers.
- Create a MySolidWorks account using your CAD serial number by following the procedure outlined [here](#).
- You will also receive 2 certification vouchers with your Student Edition order (see more information below). These certification vouchers begin with P-... and will allow you to take 2 different certification exams that assess your SOLIDWORKS knowledge. These certifications are great resume/CV builders that may help you get a job.

SUPPORT CONTACTS

Desktop

- [Explore FAQs](#) and other helpful docs, or submit an online form.

3DEXPERIENCE Platform

- Please post your questions/issues in this specific [3DSwym Community](#). You must be signed into your **3DEXPERIENCE** account to post in this Community.

INSTALLATION:

Don't forget to check system requirements before installation:

<https://www.solidworks.com/support/system-requirements>

If you requested a Student Edition media kit, please use the DVDs provided (a set of 2 DVDs is included) and follow the on-screen instructions.

To download your Student Edition from the Internet, please follow the instructions below:

- Visit www.solidworks.com/SEK and complete the form
- Enter your email address in order to obtain a confirmation email.
- Choose "Student" in the final drop-down.
- Click "Yes" next to "I already have a Serial Number that starts with 9020:"
- Select the most recent version from the list of releases.
- When the download is complete, UNZIP the installation manager and then follow the installation instructions using the Serial Number that you received at purchase. **Accept all defaults during the installation.**
- Have your SOLIDWORKS serial number ready to use during the installation. Your serial number can be found in the confirmation email sent to you during the purchasing process.
- **Your SOLIDWORKS Student Edition 2020-2021 must be installed and activated prior to July 31, 2022.**

SOLIDWORKS Community Download Instructions

Download instructions for qualified educators, students, military, sponsored organizations, makers, and hobbyists.

Please enter your information in the fields below. Note that all fields are required. Please enter accurate information, including email address. Download instructions and other important information may, depending on the type of license selected, be emailed to the address you provide.

Please refer to DS SOLIDWORKS Corp.'s privacy policy link below to understand how your data may be used.

NOT FOR COMMERCIAL USE.

Contact Information

FIRST NAME:

LAST NAME:

EMAIL:

Select one of the following:

Product Information

I already have a Serial Number that starts with 9020: ☐ Yes ☐ No

Version: ☒ 2020-2021 ☐ 2019-2020

[Request Download](#)

ADDITIONAL INFORMATION:

- More detailed installation instructions: www.solidworks.com/SE_installation
- If you experience any issues with the installation, please take a look at the support topics and especially the **Technical FAQs** located here: <http://www.solidworks.com/studentsupport>.
- NOTE: If you do not activate your license during installation, you will only receive a 30-day license. Once activated, your **SOLIDWORKS Desktop Student Edition will expire 365 days from installation.**

CSWA & CSWP EXAM INSTRUCTIONS:

This year, the SOLIDWORKS Student Edition includes 2 exam vouchers: One for the Certified SOLIDWORKS Associate Exam (**CSWA**) and another for the Certified SolidWorks Professional Exam (**CSWP**). The CSWA is the entry-level exam, and should be attempted first.

Both of these exams are industry-recognized exams that test your knowledge of 2D drawings, 3D solid modelling, basic engineering concepts, and fundamentals of SOLIDWORKS (parts, dimensions, design changes, and assembly design). They're difficult exams with an average global pass rate of less than 60%, so please don't attempt to take them without proper preparation.

For more information about the CSWA exam requirements, topics, recommended training, and a sample exam, visit: http://www.solidworks.com/sw/support/796_ENU_HTML.htm

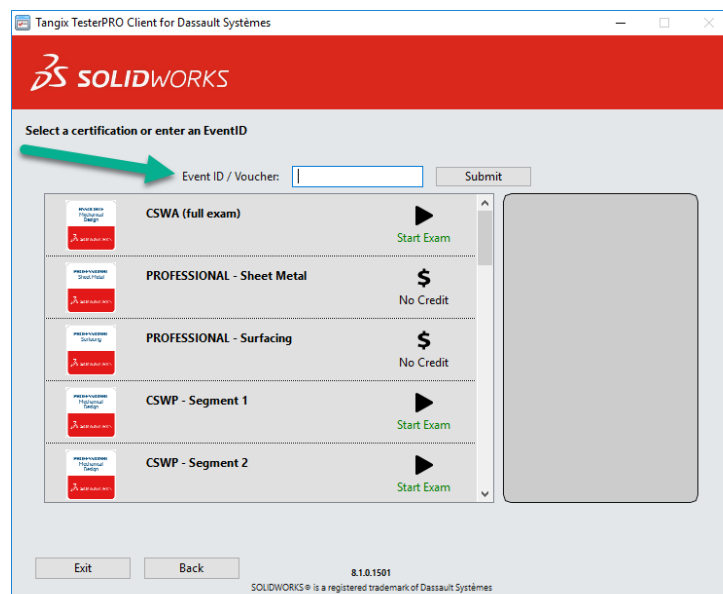
For more information about the CSWP exam requirements, topics, recommended training, and a sample exam, visit: http://www.solidworks.com/sw/support/797_ENU_HTML.htm

If you do pass the exams, however, these certifications will give you a leg up on the competition when looking for internships or permanent employment. We wish you the best of luck!

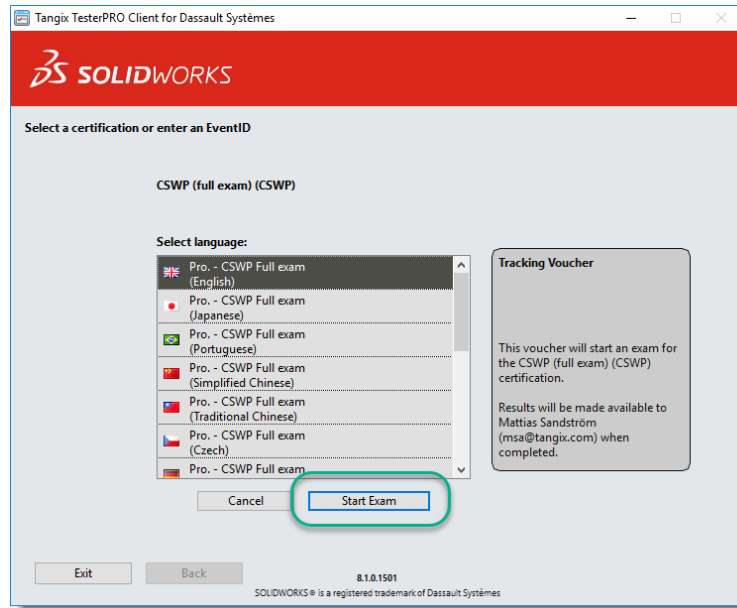
TAKING THE EXAM(S):

To take the exam(s), just follow the instructions below. If you have any problems, email us at certification@solidworks.com.

- 1) Download and save the testing software from [this link](#) to any disk location of your choice.
- 2) Execute the file you just downloaded and proceed through the initial set-up screens
- 3) Login or create a new VirtualTester account. If you forgot your password, then go [here](#) to reset it.
- 4) Choose "SOLIDWORKS."
- 5) When you get to this screen, enter the "Voucher Code" and click Submit:



- 6) Click on the language in which you'd like to take the exam and then the "Start Exam" button:



- 7) Take the exam. You have 3 hours to complete it, and it will be scored immediately upon completion.

3DEXPERIENCE PLATFORM Information:

If you already have a [SOLIDWORKS ID](#) (MySolidWorks account), you **MUST** use that email & password to sign into your 3DEXPERIENCE Platform! In this case, you do not need to create a separate 3DEXPERIENCE account.

What is the 3DEXPERIENCE Platform?

A cloud-based portfolio of tightly integrated solutions (apps) built on a single Platform, using the same intuitive user interface. Collaborate in the cloud and access the growing suite of tools on the Platform to manage all facets of your project!

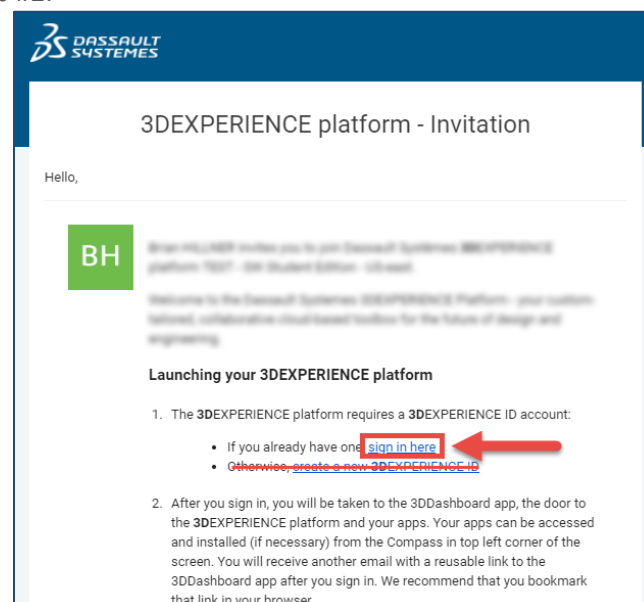
[Click here](#) to learn more about the amazing cloud-based toolkit you can now access from anywhere, anytime on any device – even on a Mac or tablet – wherever and whenever inspiration hits.

Your 3DEXPERIENCE Platform 1-year trial of [3D Designer](#) grants you access to over 30 apps, to help you design and engineer faster than ever before:

- **Business Innovation** – the backbone of the 3DEXPERIENCE Platform, connecting you to your data and collaborating with others to improve communication and foster innovation.
- **Industry Innovation** – tools to organize, manage projects and collaborate on content in real-time.
- **3D Creator** – an easy-to-use 3D modelling app to create concept models using common CAD features, now with Design Guidance powered by artificial intelligence.
- **3D Sculptor** – a 3D subdivision (sub-D) modeling tool for creating stylized and organic shapes, with intuitive push-pull direct modeling.

STEP 1 | You will receive an email invitation from the 3DEXPERIENCE Platform.

- If you already have a SOLIDWORKS ID (MySolidWorks account), please click “sign in here” and **you must** use that email address and password to log into your 3DEXPERIENCE Platform.
- If you do not already have a SOLIDWORKS ID, please click [HERE](#) to create one first. Then proceed to Step #2.



STEP 2 | After you complete Step #1, click the link below and use your **SAME email address and password** to log into your 3DEXPERIENCE Platform:

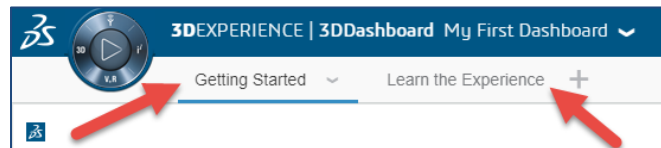
www.solidworks.com/academic-cloud

BOOKMARK THIS URL AFTER YOU LOGIN!!

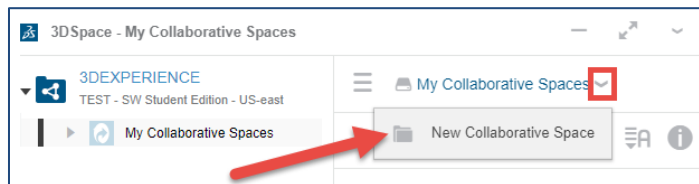
It will be your quick access to the 3DEXPERIENCE Platform.

You can also use this URL at any time from any device to log into your 3DEXPERIENCE Platform: www.solidworks.com/academic-cloud

STEP 3 | Now you're in the 3DEXPERIENCE and ready to rock!! Please explore all the important content on these two default Tabs to learn how to navigate the 3DEXPERIENCE Platform, get started customizing your 3DDashboard, connecting with the 3DSwym Community and more.



STEP 4 | Before you can model or really do anything, **you must** first create your very own Collaborative Space, using the 3DSpace app. This is where the 3DEXPERIENCE Platform will store all your 3D files. You cannot delete your Collaborative Space, so please only create one. **The name needs to be unique** to avoid choosing a name another student may have already chosen.



Create Collaborative Space

Title
Brians Awesome Stuff

Description
Description

Visibility
Private - Content visible to members only

Private - Content visible to members only
Protected - Content with maturity 'Released' or 'Obsolete' ...
Public - Content visible to all users

Create Cancel

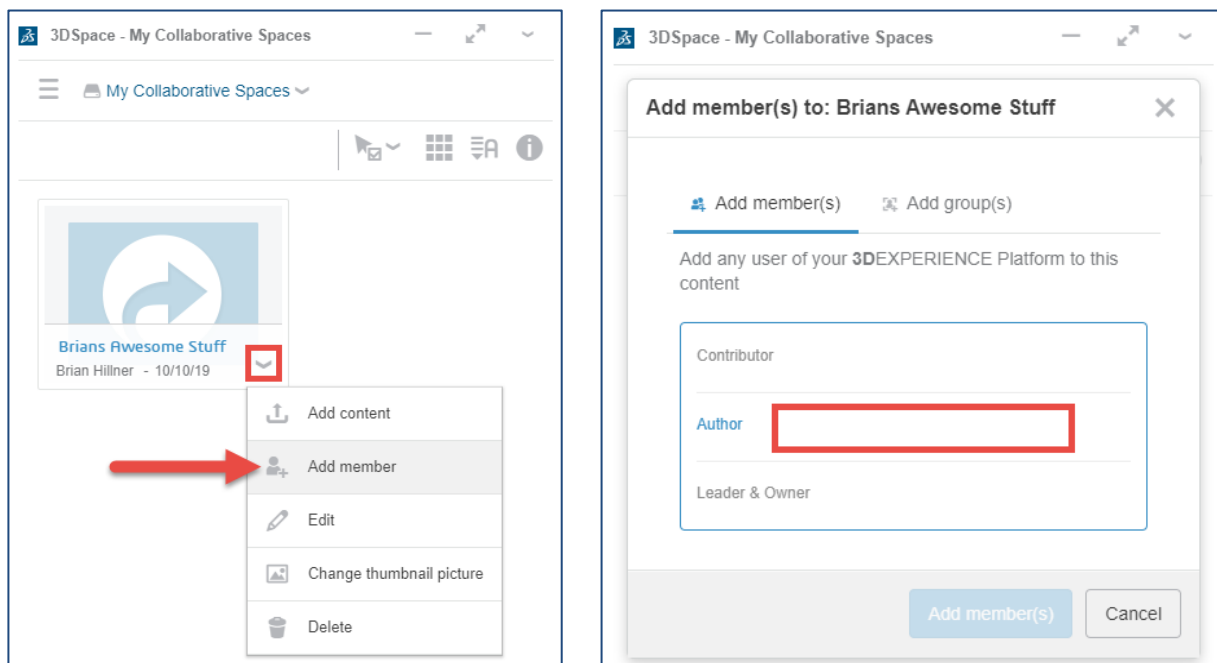
Private – this is our recommendation for your own Collaborative Space, where you want to keep your files private.

Protected – this option does not pertain to you.

Public – **beware** choosing this option makes your Collaborative Space and all your 3D files visible to *thousands* of other students, just like you!

If you are working with a classmate on another project, and want to share 3D files with them to collaborate, then only one of you needs to perform the following step – adding your classmate to an existing Collaborative Space:

- Click **'Add member'** and then enter their name or email address in the **'Author'** field.
- ***NOTE*** your classmate must already be an active member (by accepting the Platform invite email and logging in) on the **3DEXPERIENCE** Platform for them to be visible.



It's important to know the difference between the Cloud Storage options available to you.



3DSpace

- **3DSpace** – this is where all your 3D files and data will be kept. It is like Google Drive, but on steroids and super connected with all the other apps on the 3DEXPERIENCE Platform. Think of this as your sandbox to create amazing new 3D concepts, just for yourself or to collaborate with other team members.



3DDrive

- **3DDrive** – this resembles Google Drive, where you can upload any type of file, and share just a specific file or folder with another user.

****So if you only want to share PDFs or non-3D files with another user, then use 3DDrive to upload your file(s) and share with others. Do not use 3DSpace for this.****

STEP 5 | Let's break away from your training wheels and let you fly on your own. To learn how to use the new **3DEXPERIENCE** Platform basic apps, SOLIDWORKS 3D modelling apps of xDesign and xShape, visit the [MySolidWorks learning center](#). Simply sign back in using your already existing SOLIDWORKS ID that you created in Step #1, or use your already existing SOLIDWORKS ID if you skipped over Step #1.

Use your MySolidWorks ID or your 3DEXPERIENCE Platform login to access the training links below:

[Business Innovator](#) | [Industry Innovator](#) | [SOLIDWORKS Connector](#)
[3D Creator \(xDesign\)](#) | [3D Sculptor \(xShape\)](#) | [Project Planner](#)

IMPORTANT TO KNOW

- Your complimentary **3DEXPERIENCE** early access **lasts for 1-year from the day of purchase**.
- You can continue to renew each year as long as you are eligible as a student.
- If you chose not to renew, you must export your data and files **BEFORE your expiration date**. After that, they will be no longer available.
- Your trial of the **3DEXPERIENCE** Platform does not come with direct technical support, but you may post questions in the [Student Community](#). Also, click the "?" icon in the top right of the **3DEXPERIENCE** Platform to find more helpful information:

