

SOLIDWORKS® Student Edition 2025

The **SOLIDWORKS Student Edition** contains:

- SOLIDWORKS **Premium** (3D CAD software)
- SOLIDWORKS **Simulation Premium** (FEA tools)
- SOLIDWORKS **Flow Simulation** (CFD tools)
- SOLIDWORKS **Motion** (kinematics analysis)
- SOLIDWORKS **Plastics** (part and mold filling analysis)
- SOLIDWORKS **Sustainability** (environmental impact tools)
- SOLIDWORKS **Electrical Professional** (electrical systems design tools)
- SOLIDWORKS **Model-Based Definition** (define, organize, and publish 3D PMI)
- SOLIDWORKS **Composer** (technical documentation tools)
- SOLIDWORKS **Visualize** (develop rich, photo quality content and VR content)
- SOLIDWORKS **CAM Pro** (fully integrated, knowledge-based CAM system)
- Free access to **MySolidWorks Student** (video tutorials, assessments, and much more)
- **CSWA** and **CSWP** Certification Voucher

Please use the Student Edition serial number that came with your purchase for installation:

- Your SOLIDWORKS CAD serial number begins with 9020...
 - This Serial Number activates all the products that are listed above. Unlike in prior releases, you do not need additional serial numbers.
- ***AFTER INSTALLATION*** create a MySolidWorks account using your CAD serial number by following the procedure outlined [here](#).
- You will also receive 2 certification vouchers with your Student Edition order (see more information below). These certification vouchers begin with “P-...” and will allow you to take 2 different certification exams that assess your SOLIDWORKS knowledge. These certifications are great resume/CV builders that will help you land your dream job.

Please join the [3DEXPERIENCE Edu | Students](#) community* – this is a place for all students to exchange with each other, share their work and get help when needed from our experts.

*A 3DEXPERIENCE ID is required to explore this community, so please create yours [here](#) if you do not already have one.

SOLIDWORKS DESKTOP STUDENT EDITION SUPPORT

[Explore FAQs](#) and other helpful docs, or submit an online form.

INSTALLATION:

Don't forget to check system requirements before installation:

<https://www.solidworks.com/support/system-requirements>

To download your Student Edition from the Internet, please follow the instructions below:

1. Visit www.solidworks.com/SEK and complete the form
2. Enter your email address in order to obtain a confirmation email.
3. Choose "Student" in the final drop-down.
4. Click "Yes" next to "I already have a Serial Number that starts with 9020:"
5. Select the most recent version from the list of releases.
6. Select 'Request Download' and accept terms and conditions.
7. Click 'Download' > SolidWorksSetup.exe will be downloaded.
8. Double click the 'SolidworksSetup.exe' file > Unzip. This will launch the SOLIDWORKS installation manager.
9. Have your "9020" SOLIDWORKS serial number ready to use during the installation. Your serial number can be found in the confirmation email sent to you during the purchasing process.

Your SOLIDWORKS Student Edition 2025 must be installed and activated prior to July 31, 2027.

SOLIDWORKS Community Download Instructions

Download instructions for qualified educators, students, military, and sponsored organizations. Not for Commercial Use. For eligible makers and hobbyists, please explore our new [Maker portfolio](#).

Please enter your information in the fields below. Note that all fields are required. Please enter accurate information, including email address. Download instructions and other important information may, depending on the type of license selected, be emailed to the address you provide. Please refer to DS SOLIDWORKS Corp.'s [privacy policy](#) to understand how your data may be used.

Contact Information

FIRST NAME:

LAST NAME:

EMAIL:

SELECT ONE OF THE FOLLOWING (OPTIONAL):

Product Information

I already have a Serial Number that starts with 9020

Yes

No

SOLIDWORKS Version

2025 2024 2023

ADDITIONAL INFORMATION:

- More detailed installation instructions: www.solidworks.com/SE_installation
- If you experience any issues with the installation, please take a look at the support topics and especially the **Technical FAQs** located here: <http://www.solidworks.com/studentsupport>.
- NOTE: If you do not activate your license during installation, you will only receive a 30-day license. Once activated, your **SOLIDWORKS Desktop Student Edition will expire 365 days from installation.**

CSWA & CSWP EXAM INSTRUCTIONS:

This year, the SOLIDWORKS Student Edition includes 2 exam vouchers: One for the Certified SOLIDWORKS Associate Exam (**CSWA**) and another for the Certified SolidWorks Professional Exam (**CSWP**). The CSWA is the entry-level exam, and should be attempted first.

Both of these exams are industry-recognized exams that test your knowledge of 2D drawings, 3D solid modelling, basic engineering concepts, and fundamentals of SOLIDWORKS (parts, dimensions, design changes, and assembly design). They're difficult exams with an average global pass rate of less than 60%, so please don't attempt to take them without proper preparation.

For more information about the CSWA exam requirements, topics, recommended training, and a sample exam, visit: http://www.solidworks.com/sw/support/796_ENU_HTML.htm

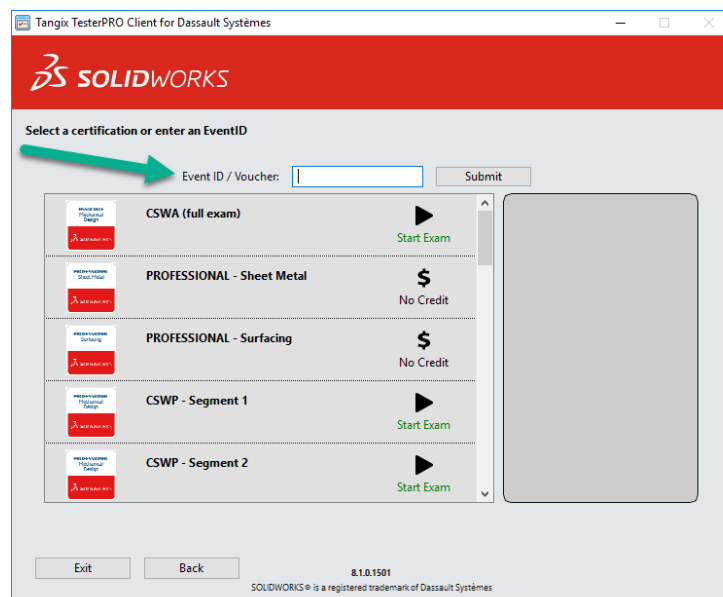
For more information about the CSWP exam requirements, topics, recommended training, and a sample exam, visit: http://www.solidworks.com/sw/support/797_ENU_HTML.htm

If you do pass the exams, however, these certifications will give you a leg up on the competition when looking for internships or permanent employment. We wish you the best of luck!

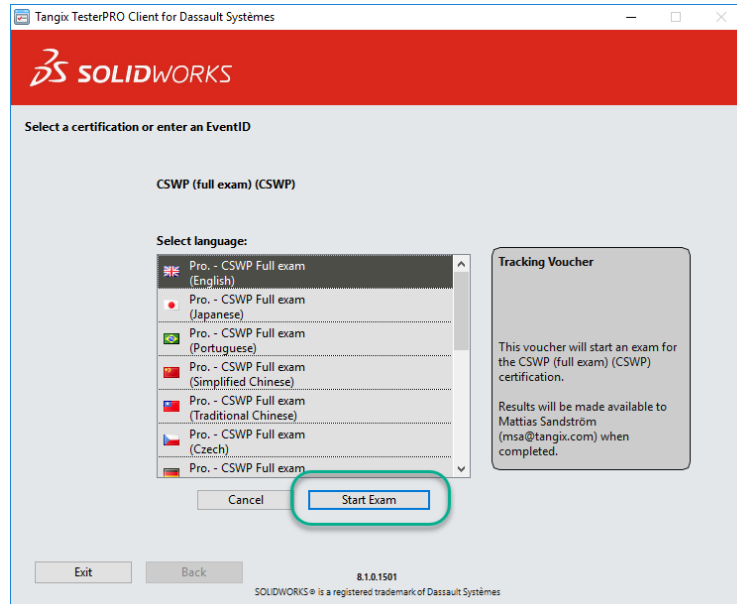
TAKING THE EXAM(S):

To take the exam(s), just follow the instructions below. If you have any problems, email us at certification@solidworks.com.

- 1) Download and save the testing software from [this link](#) to any disk location of your choice.
- 2) Execute the file you just downloaded and proceed through the initial set-up screens
- 3) Login or create a new VirtualTester account. If you forgot your password, then go [here](#) to reset it.
- 4) Choose "SOLIDWORKS."
- 5) When you get to this screen, enter the "Voucher Code" and click Submit:



- 6) Click on the language in which you'd like to take the exam and then the "Start Exam" button:



- 7) Take the exam. You have 3 hours to complete it, and it will be scored immediately upon completion.