



Material Roll and Kit Life Tracking

CrossTrack Material Tracking Lite (MTL) provides a simple, easy-to-use and proven way to keep track of what material you have, its location and, most importantly, its remaining life. As material is cut and is kitted you can continue to track the life of the kit through layup and right onto the autoclave.

Built using the same robust platform and design as the award-winning CrossTrack Composite Manufacturing suite, CrossTrack MTL offers a full upgrade path in the future should you decide to expand its functionality.

Cost-effective, simple, with reporting

Taking advantage of Microsoft's free SQL Server Express database platform, CrossTrack MTL offers a cost-effective entry point, is easy to install, learn and use. It's available to purchase or on low monthly subscription.

As all of your data is held in an industry-standard database it's easy to get information out. CrossTrack ships with a series of standard reports, but the in-built reporting engine allows you to quickly generate meaningful data and reports.

CrossTrack[®]

Material Tracking Lite

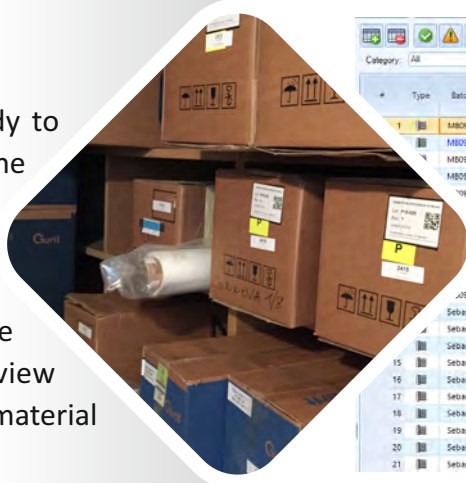
- Low purchase cost or low monthly subscription
- Installation, training and live within a day
- Uses free Microsoft SQL Server Express database platform
- Define unlimited material types
- Quickly add entire batches of delivered material
- See all stock with real-time countdown of remaining life
- Custom data fields for materials and kits
- Simple barcode scanning interface
- Touch screen friendly design
- Powerful filtering to see just the information you need
- Standard reports and built-in report generator
- Upgradable to the full CrossTrack Suite



CrossTrack in action

Material types, Batches and Stock

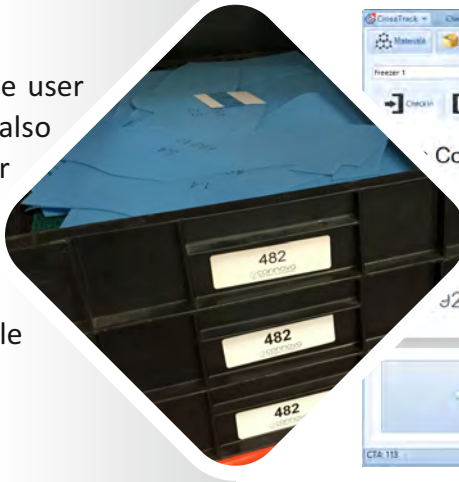
Create your material types and you're ready to book in complete batches of material with one simple screen. As rolls move in and out of the freezer staff can instantly see their current location and defrost status. Instantly view an on-screen graph, export a complete history log of a given roll or batch, or view associated documents of any format such as material specs or quality documents.



Type	Batch Code	Stock Item Code	Docs Qty	Material Type Code	Location
1	M8092016-2	M8092016-2-4	-	020033	Freezer 1
	M8092016	M8092016-2	-	020033	Shop Floor -> Freezer 1
	M8092016	M8092016-7	-	020033	Freezer 1
	M8092016	M8092016-8	-	020033	Freezer 1
	M8092016	M8092016-8	-	020033	Freezer 1
	M8092016	M8092016-10	-	020033	Freezer 1
	M8092016	M8092016-11	-	020033	Freezer 1
	M8092016	M8092016-12	-	020033	Freezer 1
	M8092016	M8092016-13	-	020033	Freezer 1
	M8092016	M8092016-14	-	020033	Thawing -> Freezer 1
	M8092016	M8092016-15	-	020033	Freezer 1
	Sebastianst...	Sebastianst stock-1	-	020033	Freezer 1
	Sebastianst...	Sebastianst stock-2	-	020033	Freezer 1
	Sebastianst...	Sebastianst stock-3	-	020033	Freezer 1
15	Sebastianst...	Sebastianst stock-4	-	020033	Freezer 1
16	Sebastianst...	Sebastianst stock-5	-	020033	Freezer 1
17	Sebastianst...	Sebastianst stock-6	-	020033	Freezer 1
18	Sebastianst...	Sebastianst stock-7	-	020033	Freezer 1
19	Sebastianst...	Sebastianst stock-8	-	020033	Freezer 1
20	Sebastianst...	Sebastianst stock-9	-	020033	Freezer 1
21	Sebastianst...	Sebastianst stock-10	-	020033	Freezer 1

Transferring Materials and Kits

The transfers screen is designed to give the user only the information they need, and is also suitable for touch screens. The large, clear screen layout let's you quickly scan barcodes to transfer rolls or kits to different locations. Each transaction is logged per user and time-stamped, and instantly visible on any other computer running CrossTrack.



Code	Barcode	From
2016-3	01-13	Shop Floor
2016-14	01-24	Thawing

Full Material and Kit Life Information

Once plies are cut you can quickly create a kit in CrossTrack, linking all rolls used and also linking any relevant external documents such as digital plybooks or quality documentation. Traceability reports can then show every transaction against each kit and any roll of material associated with it. A full reporting engine makes data extraction simple.



#	Kit Name	Order ID	Status
1	0-CBF_Head_Lug_R25-Ord-19088	Ord-19088	Complete
	0-CBF_Head_Lug_R25-Ord-19088	Ord-19088	Incomplete
	0-CBF_Head_Lug_R25-Ord-19088	Ord-19088	Waiting
	0-CBF_Head_Lug_R25-Ord-19088	Ord-19088	Waiting
5	0-CBF_Head_Lug_R25-Ord-19088	Ord-19088	Waiting
6	0-CBF_Head_Lug_R25-Ord-19088	Ord-19088	Waiting
7	0-CBF_Head_Lug_R25-Ord-19088	Ord-19088	Waiting
8	0-CBF_Head_Lug_R25-Ord-19088	Ord-19088	Waiting
9	0-CBF_Head_Lug_R25-Ord-19088	Ord-19088	Waiting
10	0-CBF_Head_Lug_R25-Ord-19088	Ord-19088	Waiting

