

According to the philosophy „Perfecting motion“ the company Julius Blum GmbH produces high quality solutions for the furniture industry and small trade – prior for kitchen furniture. The high demands on the own products is reflected in the choice for CATALOGcreator® for the electronic spare parts catalogues. By changing the creation to CATALOGcreator® the quality and handling of the electronic spare parts catalogues could be enhanced significantly.

AT A GLANCE

Company:

Julius Blum GmbH
Worldwide, app. 5.000 employees

Trade:

Furniture - Crafts

Systems:

ERP-System: SAP
CAD-System: SolidWorks
PLM-System: SmarTeam

Project targets:

An electronic parts catalog
using the existing
3D-and 2D data to create

Solution:

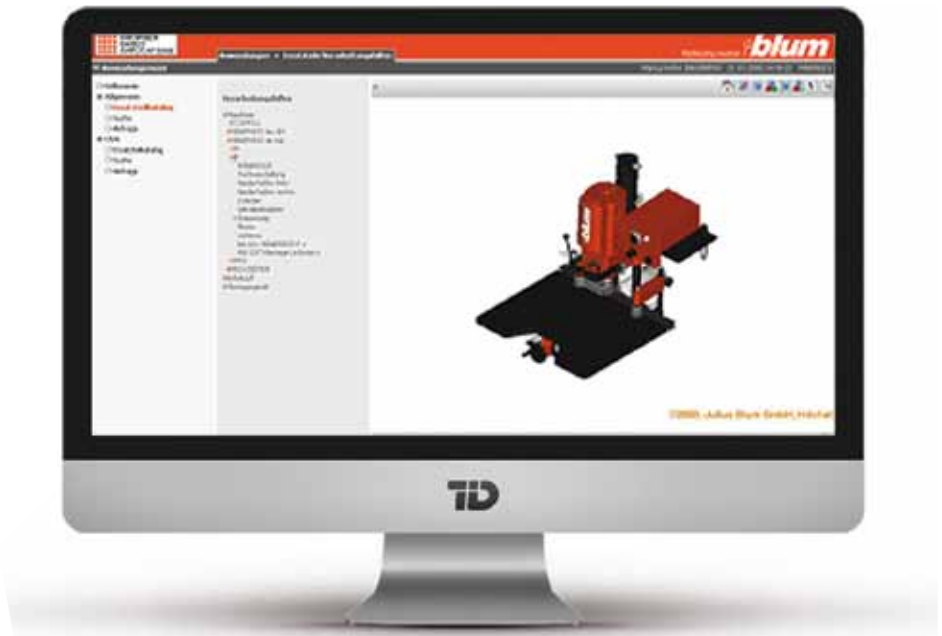
Password-protected internet solution
for registered customers

Project highlight:

Less time spent in production of
spare parts catalogs.
Development of high savings

Customer comment:

„Overall, one with the
result very satisfied“,
says Markus Hofer of the
Julius Blum GmbH



Initial situation

Up to 1997 the spare parts informations are taken from CAD drawings. This process was very time-consuming and inaccurate. Additionally the drawings have to be edited externally.

In the year 1997 the first spare parts catalogue was created; it was a PDF file with interactive links and illustrations. The extent was approx. 360 pages.

Creating the PDF file – especially the link of the illustrations with the spare parts data – was an enormous effort.

The result was, that spare parts catalogue updates were always delayed and multiple PDF file versions were circulating. There was no control of the data access and the state of distribution. The users had enormous problems to identify the spare parts.

To create and manage the spare parts catalogues with the existing CAD data in the future easier und faster, the Julius Blum GmbH decided for a new solution – the CATALOGcreator®.

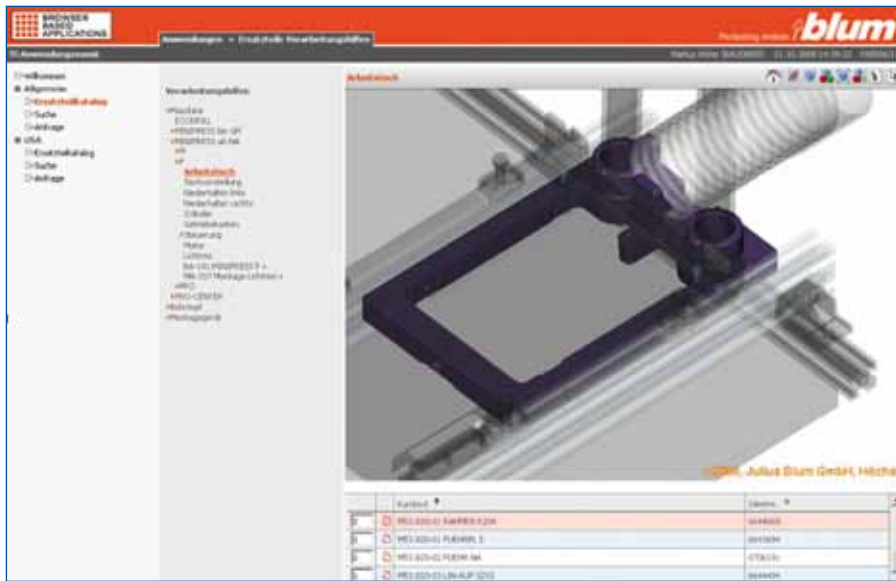
Julius Blum GmbH Blum - a strong brand

Blum turns the opening and closing of furniture into an experience that significantly increases the comfort of motion in all areas of the house, but especially the kitchen. Over 4500 employees are working worldwide realising our goal to create perfect motion for Blum fittings systems. Within this process, we always focus on the needs of the kitchen and furniture user.

Our fittings systems shout „high quality“ with their well-thought-out function, recognised design and high durability. They are designed to spark inspiration and create an emotional experience out of day-to-day kitchen tasks.

We support our partners with a comprehensive range of products and services. In order to stay on track to achieve our goals, we keep a constant dialogue open with kitchen manufacturers, joiners, distributors and kitchen users all over the world.

For clearly represented assembly devices an electronic spare parts catalogue should be created with the software CATALOGcreator®.



The Screenshot shows the selection of a spare part in 3D with BOM

Requirements

The products, shown in the spare parts catalogues – the assembly devices – are distributed worldwide by the Blum subsidiaries and representations. Maintenance and service are done by the Blum subsidiaries.

The company Blum has the objective to create an electronic spare parts catalogue with the existing 3D and 2D data. A high spare parts identifiability with part structure view should be guaranteed.

It was also important for the Julius Blum GmbH that no own programming effort is necessary. With the electronic spare parts catalogue, generated by the CATALOGcreator®, these requirements should be met.

Solution

System oriented the product and CAD drawing data has to be edited first for the CATALOGcreator®. The parts lists are taken from the ERP. The CAD data, created with SolidWorks and managed and version-controlled with SmarTeam by the company Blum, is converted with the XVL Converter into high compressed XVL models and edited with XVL Studio. The XVL models are eminently suited because of their small file size to be used in spare parts catalogues and they can be animated and rotated for the use in trainings or assembly instructions.

Because of the high flexibility of the software CATALOGcreator® the data from the different software environments can be integrated smoothly into the electronic catalogue. As publishing form the company Blum has decided for a password protected internet solution, that is only available for registered customers. The distribution is done by the department „Blum E-Services“.

Conclusion

Because of the conversion to the spare parts catalogue software CATALOGcreator® Julius Blum GmbH could reduce the time effort and the costs for creating the spare parts catalogues significantly. Easy handling of the software and the high quality of the XVL models eminently support the Blum service and helpdesks in their task. „All in all we are very satisfied with the result“, says Markus Hofer of Julius Blum GmbH.

Julius Blum GmbH
Industriestraße 1
6973 Höchst, Österreich
www.blum.at

