

Moldex3D

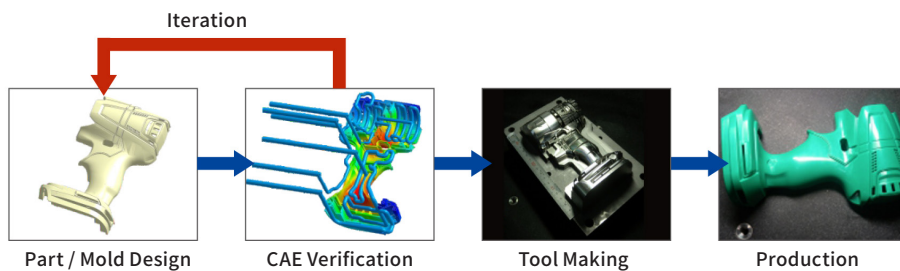
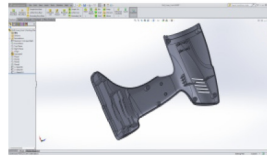
SYNC

Gain CAE Insights in CAD Software



Direct Molding Simulation in CAD Environment

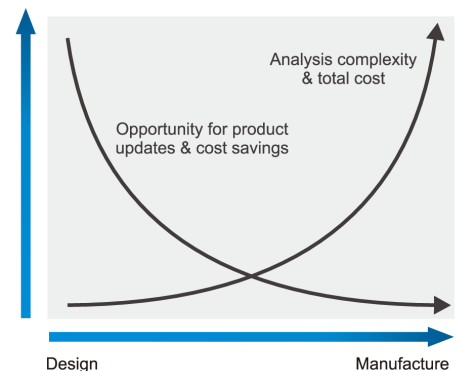
Moldex3D SYNC is a CAD-embedded software with intuitive workflow from CAD modeling to simulations. Users can synchronize design changes in a fast and easy way with no file translation needed, for quick iteration for mold design validation and optimization.



Why Choose Moldex3D SYNC

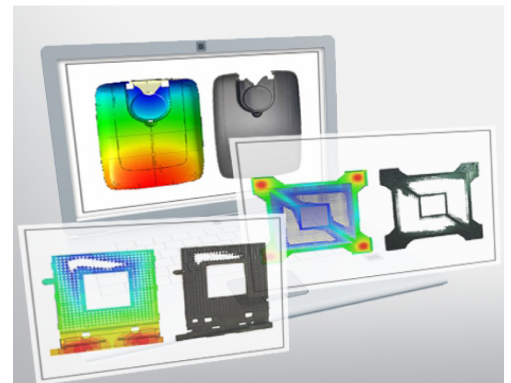
Moldex3D SYNC ensures the molding simulation accuracy and process efficiency. Users can get satisfied with its usability to evaluate and optimize the Design for Manufacturing (DFM) while meeting the market demands with higher cost savings.

The intuitive workflow allows direct access to CAD systems for model designs, performs complete product evaluation, perfectly simplifies the complicated model preparation, and requires no additional learning cost to process CAD models seamlessly with no worries for the data lost and tolerance problems.

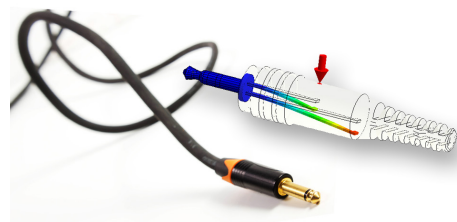
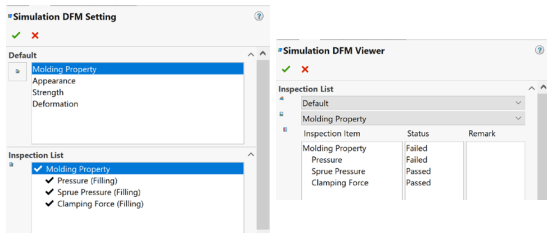


Accurate Insights of Possible Defects

Moldex3D SYNC allows users to detect molding defects such as short shot, flash, sink marks, weld lines, etc. before manufacturing. Its high interoperability improves modeling and simulation efficiencies and gives users competitive advantages of market.



Moldex3D SYNC



Tooling Validation

- Gate location advisor
- Cooling time indicator
- L/t indicator and moldability check
- Sink mark indicator

Smart Design Tool

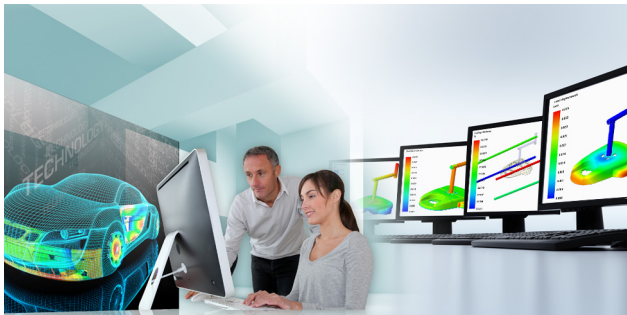
- Design Parameter Study (DPS)
- Simulation design for manufacturing (sDFM)
- Gate & Melt entrance wizard
- Runner design wizard

Injection Molding Simulation

- Thermal plastics materials analysis
- Flow/Pack analysis
- Cool and Warp analysis
- Multiple-component molding simulation

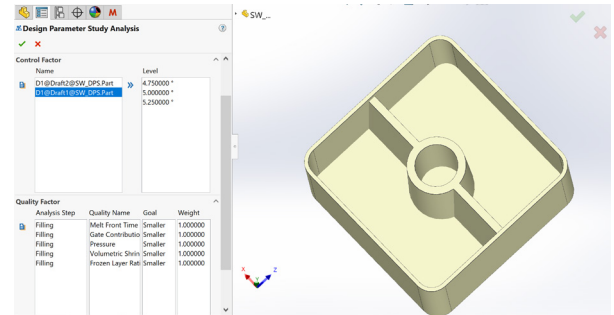
Efficiency and Usability

- Moldex3D embedded in CAD
- Pre/post processing integration
- HPC/remote computing
- Result Interpretation and Analysis report



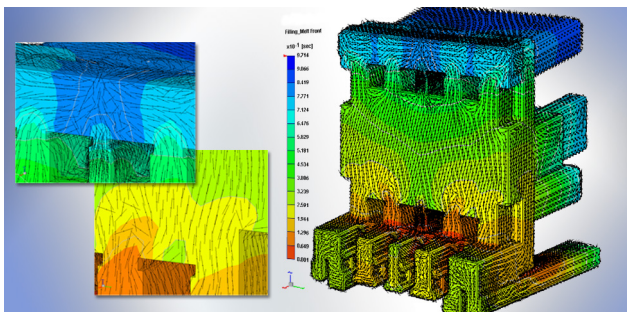
High-Speed Automated Tools

Moldex3D SYNC enables users to optimize multi-gate locations, cooling time, potential areas of flow mark, and L/T ratio. Its automatic 3D meshing engine, intelligent process wizards, and full support of Flow/Pack/Cool/Warp analysis provides quick design validation and process optimization.



Design Parameter Study (DPS)

Moldex3D SYNC provides optimization tool for geometry design to get the best product dimension. CAD data can be utilized as the control factor to accomplish a series of analysis jobs of design modification through streamlined workflow. Also, report will be provided with result visualization and comparison for users to find out the best design.



Databank with more than 8,000 Materials

Precise data ensures simulation accuracy. Moldex3D databank offers more than 8,000 materials for plastic industries, and even complicated fiber-reinforced materials analysis for stress behavior validation and mechanical property optimization.



High-Performance Parallel Processing

Moldex3D SYNC supports parallel processing for multi-core, multi-CPU, and multi-PC cluster, enabling users to speed up simulation for complex models, shorten work time, and achieve outstanding performance for models with large number of mesh elements.

Platform

Software

OS	Windows 11, Windows 10
Moldex3D	Moldex3D 2023
SOLIDWORKS®	2018, 2019, 2020, 2021, 2022, 2022, 2023

Moldex3D



CoreTech System Co., Ltd.

mail@moldex3d.com

For more information, please visit www.moldex3d.com

Copyright © 2023 Moldex3D. All rights reserved.

Please refer to Moldex3D website for the latest product information.