

EXAPT



WE ARE TOMORROW'S TECHNOLOGY

INNOVATION BASED ON TRADITION

You search for modern and efficient turning and milling strategies? Then get better acquainted with EXAPT- the reliable partner for high-end CAD/CAM systems, tool management, Industry 4.0 and Smart Factory solutions.

We develop high-end solutions for NC-production which offers you an enormous increase of efficiency. Furthermore you receive innovative strategies for tool lifecycle management production data and tool data management. **EXAPT** stands for: **EX**tended **A**utomatically **PT**rogrammed **T**ools.

Your advantage of EXAPT system solutions is the structure. All single components and modules are built on the same database platform, scalable and combinable in an uncomplicated way. In this way you easily get a universal process chain in your production.

As a result of our close collaboration with our customers and our research partners, the EXAPT system solutions are

constantly updated and brought up to the current state of technology, and to today's and future changes. In this way we guarantee a perfect selection and implementation as well as a reliable and fast support for our software systems.

Our customers are impressed of our solutions and value our long-standing market experience of meanwhile more than 50 years, as well as our large product portfolio, flexibility applicable and adaptable for different lines of business.

EXAPT has its headquarter in the city of Aachen - just a stone's throw away from the elite university RWTH Aachen and the Fraunhofer Institut Aachen.

Research is very important for us. In close cooperation with the two universities we daily manage new challenges to make CAD/CAM, tool management, industry 4.0

and smart factory more expedient, more future-proof and more efficient. In collaboration with EXAPT you have an insight in future industry solutions long before market-opening - an enormous advanced knowledge and competitive edge.

With innovation and tradition we are the future technology!

Profit from this added value and enrich your company with EXAPT!

We are looking forward to meet you soon!

Best regards



Michael Servos
Manager

EXAPT

EXAPT SYSTEMTECHNIK STATEMENT

MISSION | VISION | VALUES

OUR MISSION

With our services and reliable, user-friendly products we set standards of innovation and accompany our customers on their path to excellence.

SERVICES

We support our customers with profound and professional, expert and technical consultation.

RELIABLE AND USER-FRIENDLY PRODUCTS

Our products are bug-free and stable, easy to understand and use.

STANDARDS OF INNOVATION

For our customers and competitors we set standards for the use of new technologies and application areas.

WE ACCOMPANY OUR CUSTOMERS ON THEIR PATH TO EXCELLENCE

Our customers are our partners and we support them in implementation and the use of innovations in a close and cooperative collaboration of equals.

OUR VISION

United and with highest quality we are trendsetter of the digital manufacturing.

UNITED

Our customers, partners and we, together as a team working hand-in-hand.

HIGHEST QUALITY

We create bug-free software and provide the highest safety as well as top-consultancy with phenomenal technical competence.

TRENDSETTER

We are technology leaders of the digital manufacturing and take over a pioneer-role in that evolution.





OUR VALUES

FAMILY

Stay human and assume social responsibility!

We pay attention to the family situation, the social engagement and the strength and individual needs of our employees.

TEAM SPIRIT

Be friendly to each other!

We enjoy an open and amicable social interaction with our colleagues.

INNOVATION

Be innovative and set new trends.

We shape our markets by the early identification with research-trends and manufacturing customer's needs.

SUSTAINABILITY

Act consequently starting from initiation up to finalization.

We always act in the actual and future interests of our customers, products and employees and our company.

SELF-RESPONSIBILITY

Work self-responsible!

We have the right and obligation to act self-determined and are responsible to orient our task fulfilment to the vision and mission.

STRUCTURE

Deal with the company-structures!

We create necessary structures and observe those. We continuously question existing targets and suggest constructive improvements, we set new effective standards.

CUSTOMER FOCUS

Create enthusiasm about quality!

We inspire our customers with a fair and binding handling and convincing added values.



THE EXAPT-SUPPORT

ALWAYS IN GOOD HANDS

Every assistance you need for your EXAPT applications in your company is rendered by our support-team.

WE WILL HELP YOU!

If you want we manage the organization and implementation of the whole project progression.

In this process we serve and support you from business analysis to introductory phase up to the running system operation. Our consultants and project manager will be pleased to help you.

WE BROADEN YOUR MIND!

At EXAPT you find an extensive and targeted offer of training courses and seminars. Search your preferred date and book online on our homepage. Moreover we offer workshops customized to your specific and individual requirements. An excellent learning environment with large training rooms, the latest equipment and high-quality training documents is waiting for you.

Every workshop can also take place on-site in your company or city.

Our experts are pleased to visit you, and show you and your employees the EXAPT solutions with practical examples and proposed solutions. With actual learn contents, consistent with the actual state of technology, it is guaranteed that you quickly and effectively fulfil your tasks. You already know which training courses or seminars enrich your know-how? We are happy to help you to compose the right training concept for you.

WE SHARE OUR EXPERIENCE!

Following our long-term practical experience and constant evolution, we can quickly solve problem situations or simply give you numerous tips on how to handle our EXAPT systems – we'll be there for you!

The common exchange of experience and the close cooperation with you has highest priority for us. For a more intensive service, we offer additionally to our telephone hotline the EXAPT remote maintenance. We achieve that with the help of safe and current remote-systems.

With modern helpdesk-systems we analyse and pursue your task and ensure a professional consulting on process optimization.

With the EXAPT maintenance and support contract you get the carefree package for your EXAPT installation. With periodic updates, constant optimization and intensive care you get the support to solve your daily tasks – service means for EXAPT to see the possible challenges with your eyes!



WE DO NOT SELL PRODUCTS

WE CREATE ADDED VALUES WITH THE HELP OF SOLUTIONS

Your wishes are the centrum of our thoughts and our handling. We know every company pursues individual targets that can only be fulfilled with optimal measures. Together we develop all steps that are needed to meet the upcoming challenges and achieve the discussed target values.

With extreme care the EXAPT employees apply themselves intensively to your wishes and matters. Depending on the project volume we arrange a project-team with our experts. In this way we provide the needed know-how, extensive support and attention.

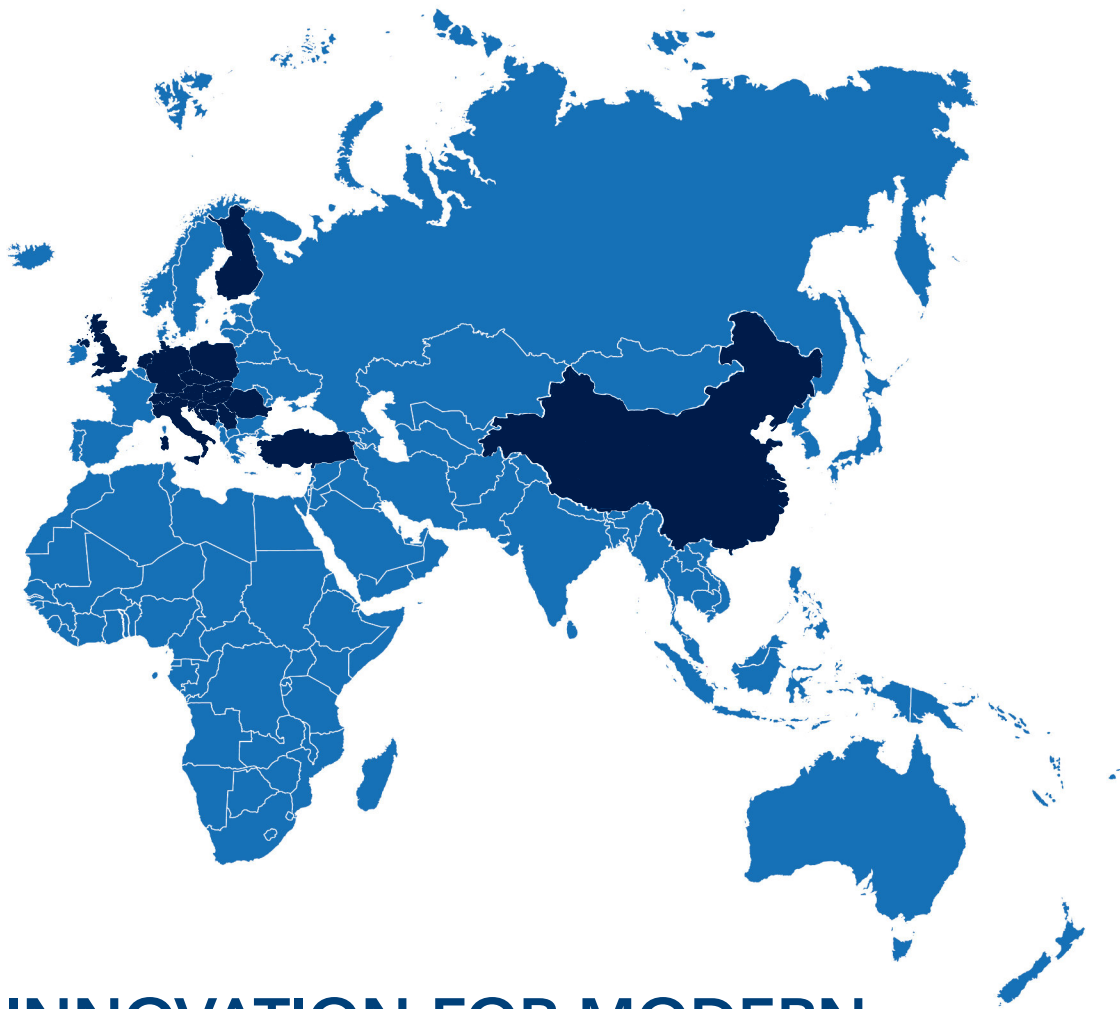
WE ARE HAPPY TO SHOW YOU FOR WHOM WE WORK FOR!

The long-term satisfaction of enthusiastic customers is very important for us. It confirms our services and added values we render for you, and it daily encourages us to deliver better results. Many customers already work for decades with EXAPT and express their enthusiasm frequently with positive feedback...

In the last years we could convince many new customers of EXAPT and our service. So we serve today from the site in Aachen about 650 local and international companies of the manufacturing industry.

Learn more about the challenges, problem solving and sustainable successes, which are the result of the implementation with the solutions developed by EXAPT.

Do not hesitate – we are only a phone call away!



INNOVATION FOR MODERN MANUFACTURING

THE RESEARCH PARTNERS OF EXAPT

We inspire our customers constantly with the new innovations for modern manufacturing. EXAPT achieves that with active and goal-oriented research. We work together with well-known elite universities, for example with the RWTH Aachen and Fraunhofer Institut. Nowadays our contacts to diverse research institutes spread at a European level.

We promote the scientific research and programming language development for numerical controlled manufacturing systems, as well as the application of IT-systems in CAD/CAM compound with focus on production using NC-controlled facilities.

In this process EXAPT is active in diverse branches, for example the metalworking industry, mechanical and plant engineering, tool manufacturing, automotive, aerospace, production technology, as well as resource and technology management.

Our range of services also includes competitive research work in the area of the structuring of CAD/CAM-systems and knowledge processing for production planning. Moreover we conduct a study for the integration of CRM/PLM with CAD/CAM, as well as utility advantages by using virtual production techniques for planning processes.

Also the use of new manufacturing possibilities in the field of process combination for future-oriented tool machines, tool and production concepts is tested by us.

Due to our active collaboration with universities we are able to use the latest strategies and methods for the preparation of the production process. In this way we secure the production competitiveness in high-wage-states.

GERMANY

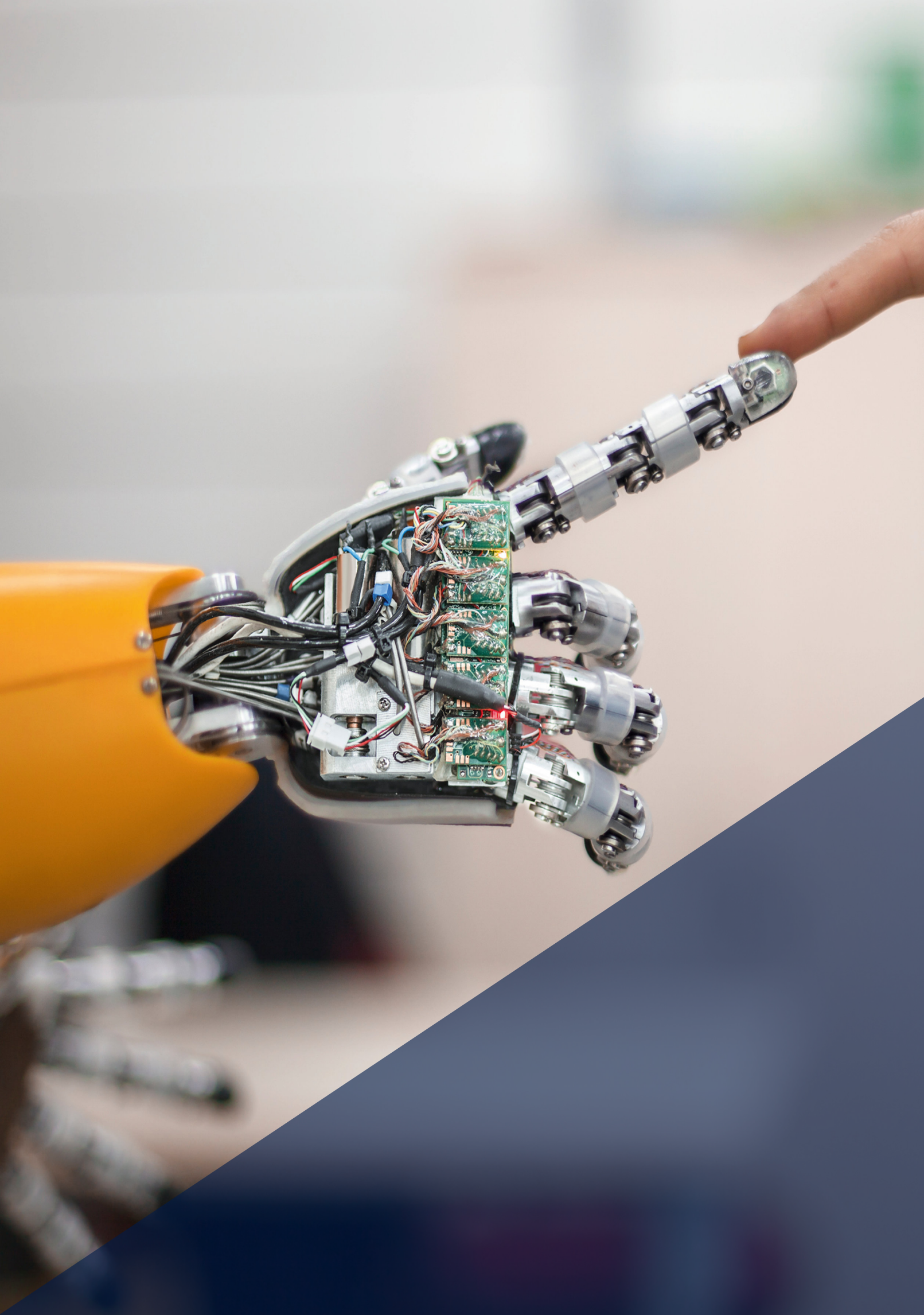
- ▶ Fraunhofer IPT Aachen
- ▶ FVP Aachen
- ▶ LLT RWTH Aachen
- ▶ WZL RWTH Aachen
- ▶ FIR RWTH Aachen
- ▶ HCI Center RWTH Aachen
- ▶ ISW Stuttgart
- ▶ LMU München
- ▶ Fraunhofer IPK Berlin
- ▶ IWF TU Berlin
- ▶ FF TU Dresden
- ▶ IF TU Dresden

SPAIN

- ▶ IK4 Tekniker Eibar

AUSTRIA

- ▶ evolute Wien





MASHINES NEED A COMMON LANGUAGE

EXAPT SMART FACTORY – INDUSTRIE 4.0 ODER

Industry 4.0 establishes the connection for an intelligent production and creates a digital linkage between your industry-, business- and internal processes. Usually the right tools to develop effective strategies for your digital transformation are missing. At this point the EXAPT software comes into play because we provide an optimal connection between the production-, information- and communication technologies.

EXAPT smart factory forms the digital, intelligent and connected factory, it is the production area where your

production plants and logistics systems organize themselves.

That software solution arranges a constant data exchange which leads to an optimal capacity utilization of your machines. Even short-term changes in the demand or failures in the value chain can be quickly compensated. In spite of the increasing individualization of the production, your company can work cost-, time- and resource efficient - everything with the help of EXAPT.

Our CAD/CAM solutions, as well as the production data organization and resource management, boost the efficiency and flexibility of manufacturing in your company, so that you achieve a profitable growth.

We are a part of the platform for the industrial revolution - you also have a place on this platform - optimize your processes with EXAPT.

IMPRINT

Print for the
EXAPT Systemtechnik GmbH

Local court Aachen HRB 1172
USt.Id.Nr.: DE121677646 |

Managing director
Michael Servos

Chairman of the Supervisory Board
Dr. Arndt Richter

Postal address
Post office box 10 06 49
52006 Aachen
Germany

Visiting address
Theaterstraße 12
52062 Aachen
Germany

Tel.: +49 241 477 940
Fax: +49 241 477 942 99

info@exapt.de
www.exapt.de

Graphic design and type setting
Tobias Küppers und Tobias B. Tillmann GbR
www.tnt-aachen.de

List of trademarks
All trademarks of EXAPT
Systemtechnik GmbH are permitted
under trademark law.
The used design elements are
intellectual property of Tobias
Küppers und Tobias B. Tillmann GbR.

© Copyright
EXAPT is a registered trademark of the
association to support the EXAPT
systems e.V.

© Copyright reserved.

Copyright
Text, pictures, graphics (and the appearance)
are protected under copyright law and
other protective legislation.
Therefore the content cannot be copied,
accessed or modified by unauthorised third
parties.

Image rights
cover sheet & back
EXAPT Systemtechnik GmbH

Pages 1 - 2
EXAPT Systemtechnik GmbH

Pages 3 – 4
I-Stock-photography-ID: 537417802
Picture credits: LoveTheWind

Pages 5 – 6
I-Stock-photography-ID: 512220566

Pages 7 – 8
Stock-illustration-ID: 489435944

Pages 9 – 10
I-Stock-photographies-ID:
521141166
Picture credits: muratsenel

The EXAPT logo is displayed in a large, bold, white sans-serif font. The 'X' is stylized with a diagonal slash. The logo is positioned in the bottom right corner of the page, partially overlapping a dark blue background and a vertical strip of a technical drawing or photograph showing a cross-section of a mechanical part.