



**EASY** +

**QUICK** +

**FLEXIBLE** +

**ACCURATE** +

**FAST STRIP LAYOUT** +

**POWERFUL UNFOLD** +

**3D COMMUNICATION** +

**COMPLETE TOOL DETAILING** +

**PRODUCTION-READY-LIBRARY** +

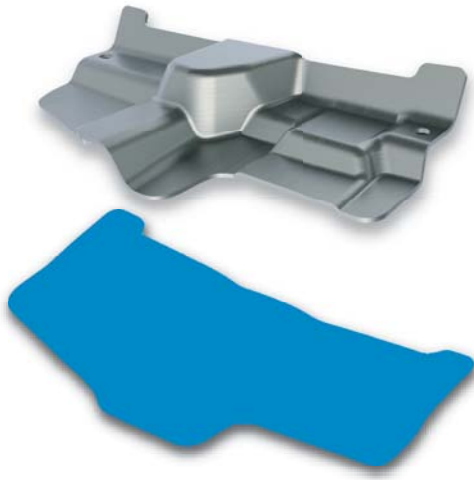
**SMART FEATURE RECOGNITION** +

**HIGH ASSEMBLY PERFORMANCE** =

POWERFUL  
**TOOL DESIGN**

**SOLUTIONS**

by 3D QuickTools



# Unfold

- Coining
- Copy forming steps
- Export Face with SOLIDWORKS® annotation
- Extract identical features
- Generation of blank shape and layout
- Handle deformed features, bends & bend allowance
- Hem unfolding
- Hole cluster
- Multiple thickness part

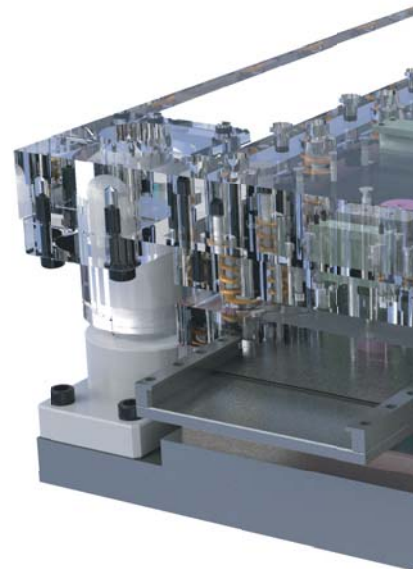
- Organized unfolding manager
- Powerful modeling functions
- Special modeling tools for cleaning data
- Strong automatic metal feature recognition
- Support automatic un-flange
- Support multiple step unfolding
- Supports design for manufacture
- Supports different bend conditions
- Unfold bend corners
- Unfold to initial blank surface
- User-defined feature

## WORLD WIDE SUPPORT MEDICAL PARTS

CONNECTORS, TERMINALS MACHINERY PARTS

ELECTRONICS STANDARD

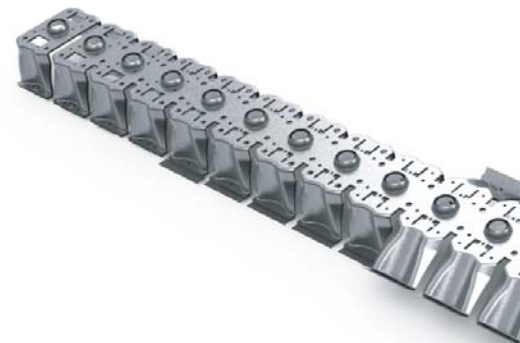
PROVEN PRECISION PARTS



# Strip Layout



- Annotation feature
- Centre of force calculation
- Clone internal notching to identical holes
- Deep draw calculator
- Display enhancement
- Edit Swap Face
- Export to Excel® for costing
- Feature renaming
- Features Group
- Instant 3D feedback
- Intelligent strip layout with automatic associative properties
- Mirror unfold part
- Nesting supports multiple parts
- Scrap design
- Springback
- Stock optimization
- Strip components for patterned feature
- Strips for unlike parts
- Support drag & drop
- Support insert/delete stations
- Swap Part
- WYSIWYG blank positioning



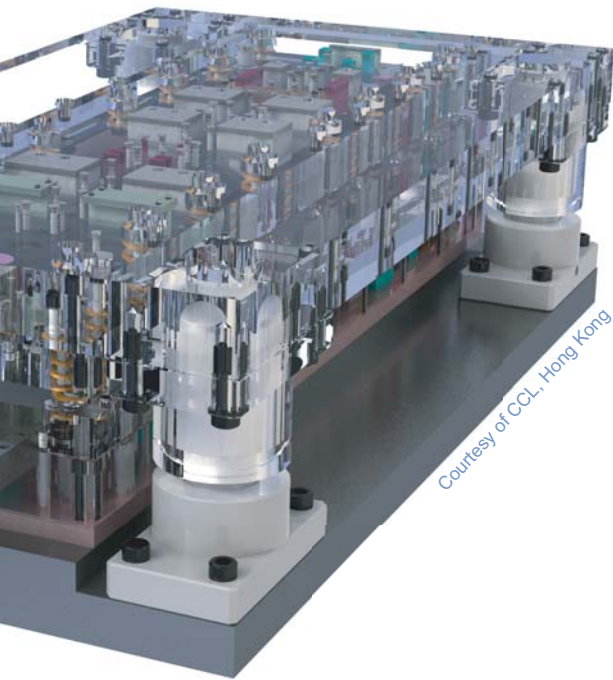
# Dieset



- Assembly drawing generation
- Auto creation of cutting & bending punches
- Automatic BOM & QuickDrawing
- Automatic component insert & hole creation
- Automatic hole creation
- Auto-ordinate dimensioning
- Bending punch preview
- Change over tooling
- Component grouping
- Compound opening
- Concurrent design environment
- Create cutting punch
- Die inserts
- Easy customization without programming
- Edit hole table

- Export face in user defined component
- Fast automatic cavity creation
- Fast update
- Interference detection
- Link Manager
- Production-Ready-Library
- Punch design utilities
- Punch features are fully editable
- Quick standard component insert
- Quick start die design optimized for stage and transfer tools
- Relief cut function
- Report generation
- Round punch for ob-round hole

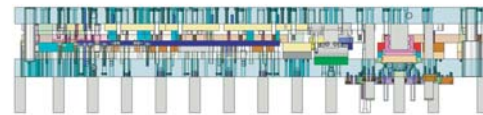
- Shoulder/Slot tool
- Simulation of die mechanism
- Sort balloon
- Standard & user definable components without programming
- Standard catalog components
- Structured die set assembly
- Support compound die and transfer die
- Tools for component placement
- Tools for modifying die set structure
- Translate components in polar direction
- User definable databases
- User defined punch
- User interface to adjust die set center



Courtesy of CCL, Hong Kong

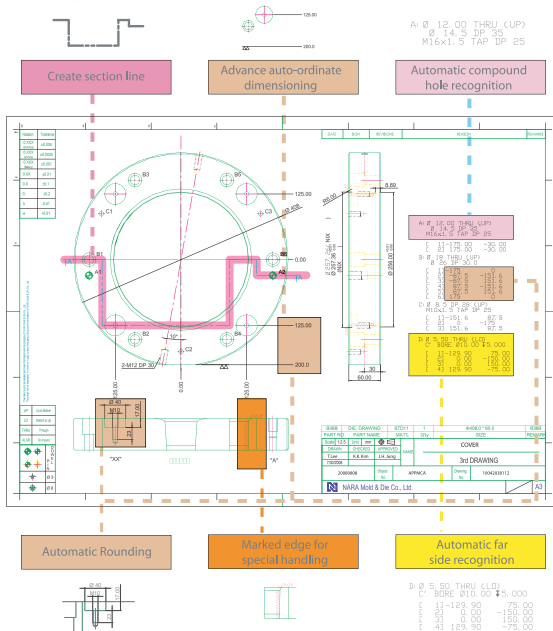


Courtesy of Precision Tool System, US



## Drawing & Manufacturing

- Advanced file property for drawing
- Design to manufacturing integration
- Edge annotation
- Hole callout
- Section line
- Sketch Tools
- Support wirecut machining
- Versatile hole table



Courtesy of Nara Mold & Die Co., Ltd., Korea

## TOOL DESIGN SOLUTIONS

[www.3dquicktools.com](http://www.3dquicktools.com)

TOOL  
DESIGN

Our Focus is Your Success



[www.3dquicktools.com](http://www.3dquicktools.com)

