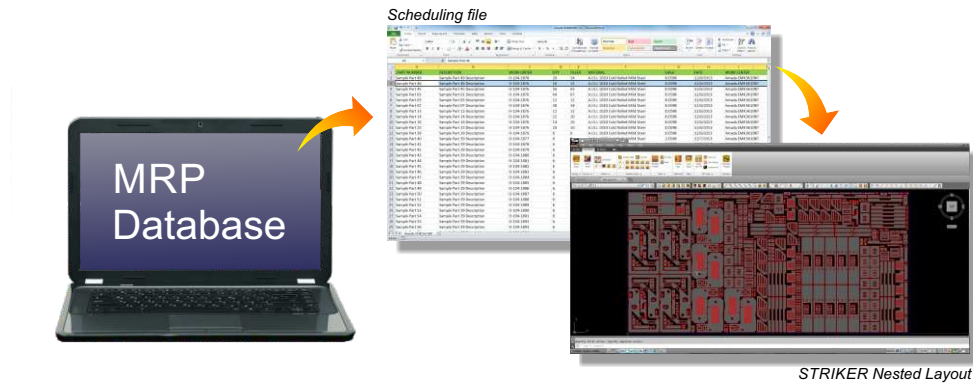


## **SS-Nest MSE™** (Manufacturing Software Extension)

The SS-Nest MRP Extension allows nest jobs to be automatically constructed from a production schedule file. Many MRP (Material Resource Planning) and ERP (Enterprise Resource Planning) systems include the ability to generate ASCII schedule files. The schedule files include required production information such as part number, quantity, material, etc. With the MRP Extension, SS-Nest can read these schedule files and constructs nest jobs automatically.



### **SS-Nest MSE (MRP/ERP) Key Benefits**

- Time savings through removal of interactive nest job construction.
- Decreased potential for scheduling errors.
- Automatically sorts nest jobs by material type and gage, and designated work center (CNC machine).
- Comprehensive error logging.
- Batch data import feature analyzes incoming parts for manufacturing integrity.
- Import interface adapts to available schedule data.