



lantek flex3d

CAD addins

f3.lantek flex3d

CAD addins ● ● ●

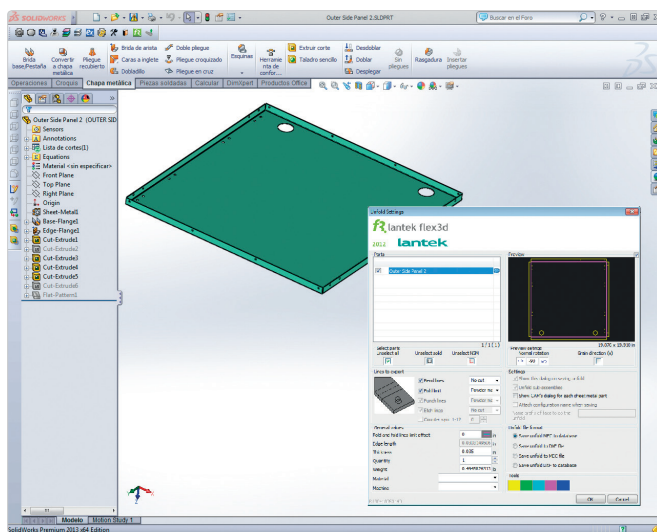
Introduction

Lantek Flex3d Addins is a set of applications from the **Lantek Flex3d** product family, designed for the automatic unfolding of any sheet metal design in 3D. It is the ideal solution for integrating your 3D models with **Lantek CAD/CAM/ERP**.

It is powerful, intuitive and direct which avoids unnecessary file generation.

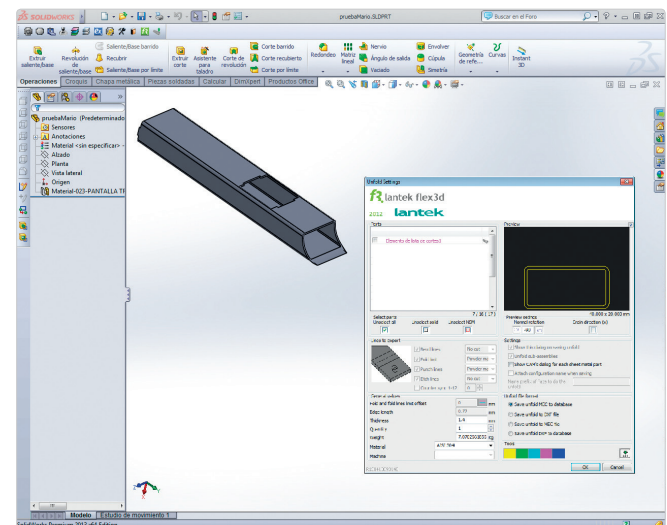
A preview of each flat pattern is shown following part unfolding prior to its final transfer to the Lantek management system.

Total associativity between 3D and 2D. Any modification made to the 3D file is automatically reflected accurately on the 2D part within the **Lantek** system.



It includes the unfolding of both individual and sets of parts (assemblies).

Also capable of exporting the assembly structure, giving a fully structured parts and materials list. The set of parts imported with **Lantek Flex3d Addins** may consist of different materials and thicknesses.



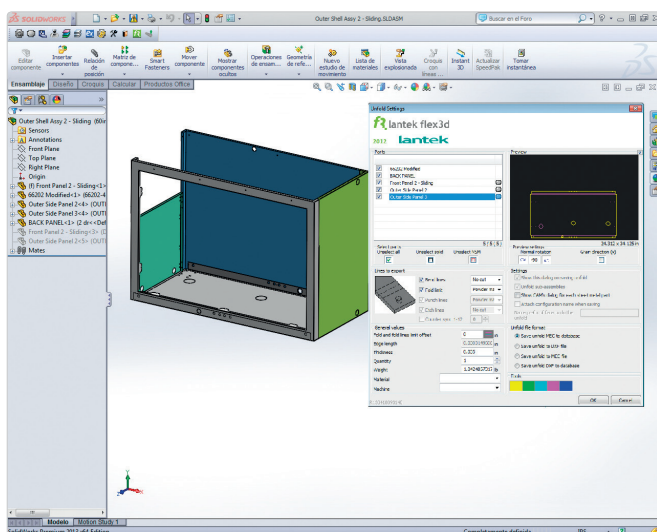
Lantek Flex3d Addins recognises and imports tube parts from standard formats such as round, rectangular and square. It is also possible to import combined structures of sheet and tube parts.

Unfolding is direct to the **Lantek** database and eliminates the need for intermediate DXF files.



Lantek Flex3d Addins is capable of identifying sheet-metal items and performs the unfolding automatically with the assigned thickness and material type.

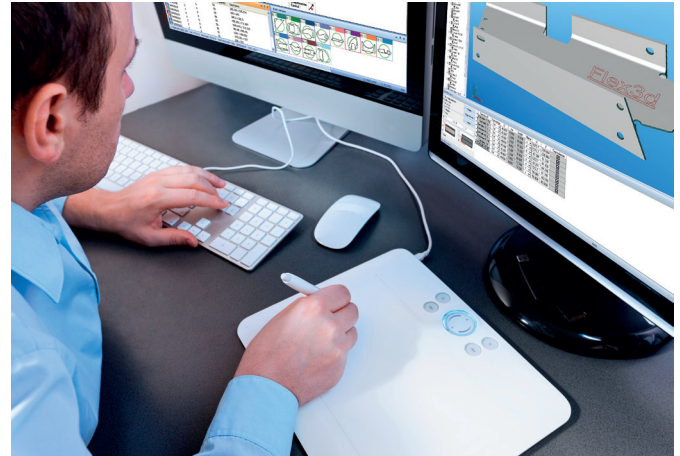
During the unfolding process, the system shows the folding lines, the limits per fold and part contour, and can assign relevant technologies to each.





SolidWorks® is a registered trademark of SolidWorks® Corporation and Dassault Systems®.

Autodesk Inventor® is a registered trademark of Siemens Product Lifecycle Management Software Inc.



Integration with Lantek

Parts and assemblies generated with **Lantek Flex3d Addins** are directly transferred to the **Lantek Integra** management system for integral manufacturing management processes, and the **Lantek Expert** system for material and machining optimisation processes. A complete solution is offered between both systems, which includes 3D part design, through to CNC generation per machine type.



Integral system

Lantek, more than just software, it is a complete solution enabling all your company processes to be managed from the administration department, passing through the design office, to the warehouse and production process management.

Lantek Expert Cut

Is a CAD/CAM system for automating plate cutting machine programming and management (oxycutting, plasma, laser and waterjet).

Lantek Expert Punch

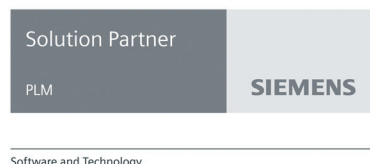
Is CAD/CAM software for automating turret punch machine programming.

Lantek Flex3d

Is CAD/CAM software for programming tube cutting and profile processing machinery.

Lantek Integra

Integral management system (ERP) for companies in the sheet metal and fabrication sector.



Software and Technology



www.LantekSMS.com

lantek

