

Agni Link

Live, "Hot" CAD-To-ERP Data Integration

Agni Link is a companion application to CAD/PLM/PDM software that establishes a bidirectional on-line connection between CAD product data and its counterpart in the ERP environment. Every time a CAD document is updated, Agni Link analyzes both CAD and ERP data, resolves discrepancies, and presents the user with a form to allow data editing, if desired. Once data is edited and validated by Agni Link, product data will be simultaneously updated in both CAD and ERP environments, thus ensuring perfect synchronization of data, while virtually eliminating redundant data entry.

Agni Link also automatically updates the ERP Bill of Materials (BoM) to reflect any changes in the composition of CAD assemblies. Moreover, with some data elements such as Raw Materials, Component type, etc., Agni Link will only allow valid entries, as defined by the ERP application, thus greatly reducing costly errors on the factory floor caused, among other things, by the use of the wrong raw materials or improper communication of manufacturing instructions.

Based on the time-proven Elmo software foundation, Agni Link was developed with designers in mind. Its purpose is primarily to allow those people to get the most out of product data that is generated, either automatically or manually, during the design process. Those people may be involved in a wide range of business processes:

- ▶ R&D
- ▶ Design and drafting
- ▶ Production & manufacturing
- ▶ Cost & estimating
- ▶ Sales & marketing
- ▶ Quality assurance



Features

- ▶ Simultaneous creation / update of product data :
 - ▶ Parts / Assemblies
 - ▶ Bills of Materials
 - ▶ Routings
 - ▶ Revisions
 - ▶ Much more
- ▶ Unlimited number of mappings
- ▶ Automatic data validation against acceptable values found in ERP system
- ▶ On-the-fly printing and generation of drawings in any format
- ▶ Supports any ERP application
- ▶ Powerful data editing (find, search & replace, copy & paste) capabilities
- ▶ Makes ERP data accessible to CAD users (e.g. costing, vendor, availability)
- ▶ Entirely customer-configurable... without any programming!



Benefits

- ▶ Reduces engineering costs by up to 20%
- ▶ Eliminates redundant data entry
- ▶ Dramatically increases BoM accuracy
- ▶ Fixed-fee implementation... No surprises!
- ▶ Reduces ERP license requirements
- ▶ Total User Control
- ▶ Customer-configurable... no programming required!
- ▶ Multilingual
- ▶ Easy implementation & use
- ▶ Unmatched customer support

CAD/PLM/PDM Platforms

- ▶ SOLIDWORKS
- ▶ SOLIDWORKS PDM
- ▶ SOLIDWORKS PDM Professional
- ▶ SOLIDWORKS PDM Workgroup
- ▶ Many More

For further information:

<http://www.elmosolutions.com>

Elmo Solutions Inc.

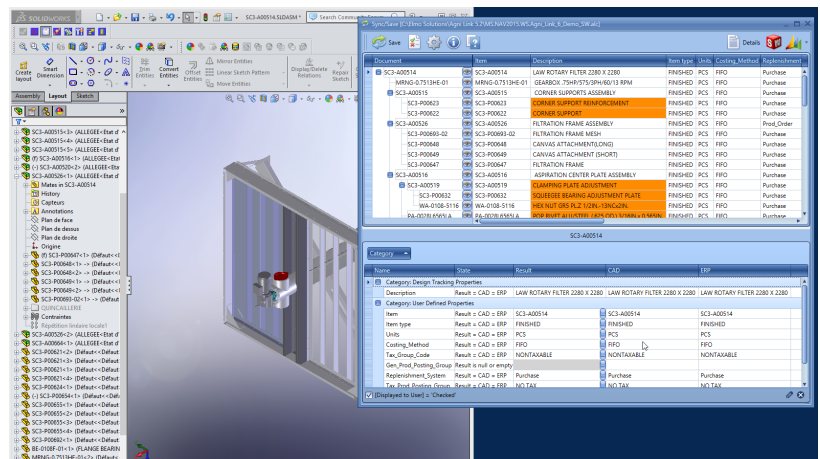
Web: www.elmosolutions.com

Email: info@elmosolutions.com

Toll-free: 844-4-CAD-ERP

(844-422-3377)

Worldwide: +1-418-623-7755



Parts and assemblies courtesy of Law-Marot-Milpro