

# fikusworks

## WIRE EDM SOLUTION FULLY INTEGRATED IN 3D SOLIDWORKS

fikusworks offers all the excellent **fikus** CAM solution for wire EDM but completely integrated in a **SolidWorks** environment. With **fikusworks** you will carry out all your CAD activities in the recognized **SolidWorks** software and, immediately, start all the CAM processes in the intuitive, flexible, efficient and proven **fikus** CAM solution for wire EDM.

### Key Features

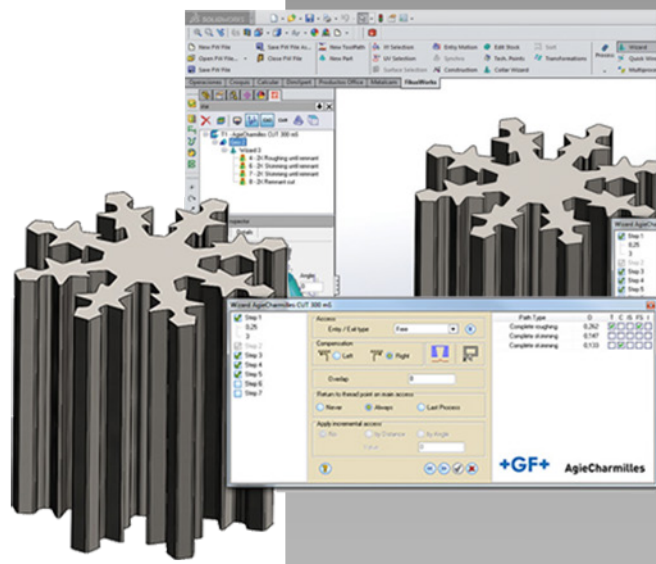
- Fully integrated in **SolidWorks**.
- Reduce time-to-market and working time drastically.
- Program all your wire EDM machines using the machine specific Wizard and technologic databases.
- Complete your job easily and safely guided by the efficient **fikusworks** step-by-step assistant.
- Take advantage of the most advanced wire path algorithms calculation for 2X to 4X cuts.
- Enjoy the first commercial solution for 4X no-core-cuts.

**3D SolidWorks CAD Solution.** Powerful, easy-to-use SolidWorks 3D CAD solution enable companies to speed up product development, reduce manufacturing costs, and improve product quality and reliability across a wide range of industries and applications. Intuitive product development tools give you the capabilities to create, validate, communicate, and manage your product designs and rapidly bring your products to market.

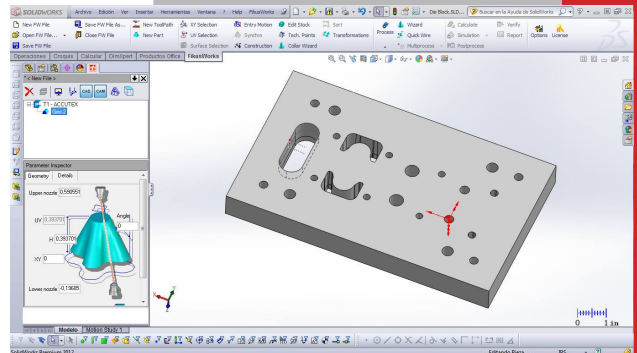
You will enjoy different efficient solutions for any design requirement:

- **SolidWorks** 3D CAD
- Design Reuse and Automation
- Interference Check
- Part and Assembly Modelling
- CAD Library
- Design Analysis
- 2D Drawing
- 3D Animations and Photorealistic Renderings
- Design for Cost: Manufacturing Cost Estimation and Quoting
- CAD File Conversion
- Product Collaboration
- Design Manufacturability

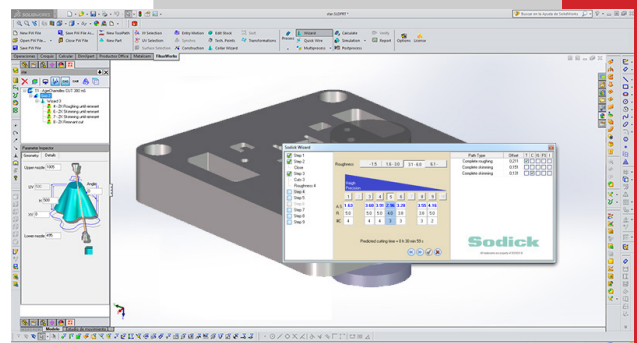
**fikusworks fully integrated CAM solution.** All this efficient solutions for your CAD requirements have now the best CAM solution for Wire EDM machining completely integrated in **SolidWorks**.



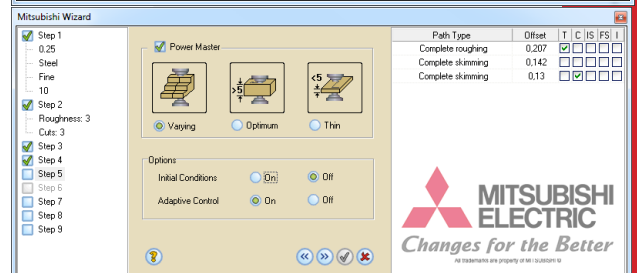
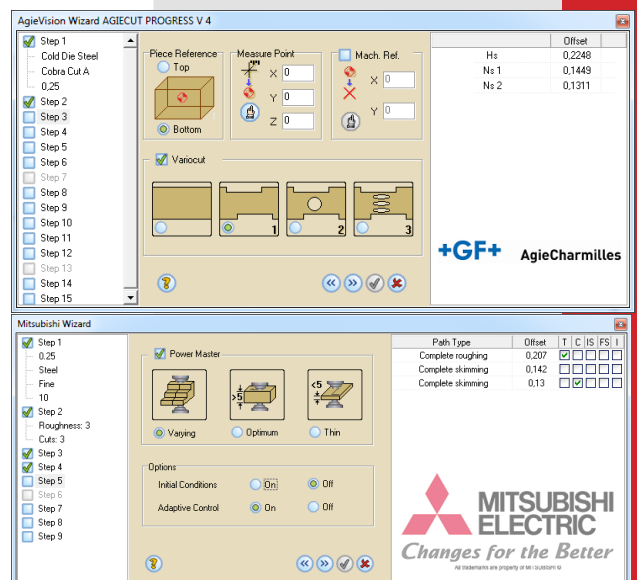
PRODUCT DATASHEET



Design of a 3D solid assembly



Working with the Wizard for Makino



Once you have finished your CAD tasks, you can directly open the **fikusworks** tab in the **SolidWorks** main menu and start to work with the intuitive, easy to use and efficient **fikus** CAM solution for wire EDM. All the tools designed for productivity increasing and reduce time-to-market included in **fikusworks**, like specific machine wizards, templates, customizable databases or automatic technological points are ready to make your work easier and highly productive.

**Easy to use.** The CAM manager leads the user through the logical sequential process, from defining the geometry and creating the part to cut, to the process definition, calculation and CNC's programs post-processing.

**Build your part.** You can build the part to cut by selecting one or two contours. The contours can be either 2D or 3D. Alternatively, you can also use surfaces or solids to build your part. If you select two contours, you can use the **fikusworks** **synchro** tool to easily and interactively synchronize them.

If you select one contour, you can either leave it as a 2X part with constant draft angle, multiple draft angles (Advanced2X) or generate a 4X part by using the Variable Draft Angle Construction function. If you selected surfaces or solids, you don't have to care about synchronizations. It's all done! You may also need to modify the corners or generate a partial clearance; **fikusworks** can do it!

**Technological points.** Do you need to set an additional stop point to clamp the part? Do you need to set it graphically or by value? Do you need to change the machine conditions at the middle of the cut? Then you will use the **Techpoints** function to set these points interactively.

**Procedures.** Is your part ready? Then let's cut it!! Just apply one of the cutting procedures: 2X cut, 4X cut or no-core-cut. Now set the parameters and you are ready. Do you need more cuts? You can copy and paste your procedures to apply more cuts. Reorder your procedures by just 'drag and drop' or even by type of cut.

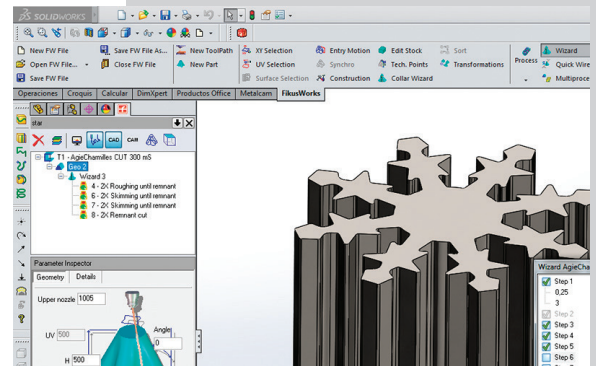
**Templates.** Is your cutting strategy well defined and proven? Save it as a **Multiprocess** and use it for other similar parts! You will save a lot of time and you will be using a proven and customized strategy.

**Wizards.** Or you can allow **fikusworks** generate the procedures and strategy for you. Run the **Wizard** for your machine, set the machine parameters (wire type, diameter, material ...) and your target quality and the **Wizard** will generate the cutting sequence according to the machine database. The data from cutting conditions will be used to prevent undercuts.

**Calculate and Simulate.** Let **fikusworks** now do all the calculations and you can then proceed to simulate your job. The wire path Simulator will show the wire removing the stock and you will be able to detect if scrap pieces would be left during the cutting process. It will also show you the current coordinates, the G-Code and the difference between the stock left and the final part.

**Post process and verify.** Finally, you generate your machine program using **fikusworks** ready to use postprocessors. Verify the program with the integrated editor -**Ficed**- and even send it to the machine directly.

**Report.** Generate the documentation needed for the shop floor, including information as the start point list and cutting order.



SolidWorks screen detail with **fikusworks** tab and characteristic **fikus** menu on left

### Technology Wizards

**fikusworks** supports technologic tables for the following machine brands:

- Accutex
- ActSpark
- Agie
- AgieCharmilles
- Charmilles
- Chmer
- Fanuc
- Acra
- Excetek
- Sodick
- Ona
- Mitsubishi
- ARD
- Makino
- Joemars
- Hitachi
- Electronica
- Maxsee

### Data Interface

Data interfaces included in SolidWorks.

### System requirements

- Processor Intel or AMD compatible with SSE2 (64 bits recommended)
- RAM Memory: 2GB or bigger
- Certified Graphic Card and controllers
- Operating System: Microsoft Windows Vista, 7 or 8
- DVD unit or high-speed Internet
- Hard Disk: 1GB free or more
- Internet Explorer 8 or 9
- SolidWorks 2012 or higher

### Available languages

Catalan, Chinese, English, French, German, Italian, Polish, Portuguese, Russian, Spanish and Turkish.

### Other Products

**fikus visualcam** for WireEDM comes in two different configurations: 2X or 4X.

**FCgeo** is a **fikus** version integrated onboard the Vision and AgieVision CNCs.

**fikus fast.wire** is a special version bundled with AgieCharmilles FW machines.

**FCcam.easy** is a **fikus** version integrated onboard AgieCharmilles CUT x0P, CUT x00 mS/Sp, CUT Exx0 series machines.

**FCcam.drill** is a solution developed for the hole drilling EDM machines.

Metalcam S.L. (Spain)

Barcelona: C/ Berruguete, 90 T: 932 74 90 40  
Burgos: C/ Caja de Ahorros Municipal, 1, 4º E T: 947 26 35 72

Metalcam Technologies Pvt. Ltd. (India) 2nd floor, 720/A7, 11th Main, 9th Cross Rd, Indira Nagar, Bangalore, Karnataka 560038 T: +91 9611686944

Metalcam China (China) Beijing: 6, Xinyuannan Rd. Chaoyan Dist. T: +86 10 84865223

e-mail: info@metalcam.com

