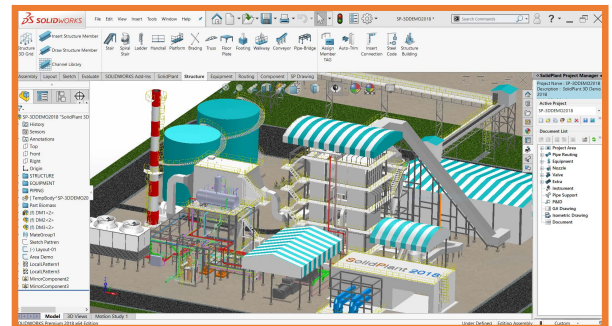


SolidPlant 2018 "All New, All You Need"

What's New SolidPlant 3D 2018 Release Note

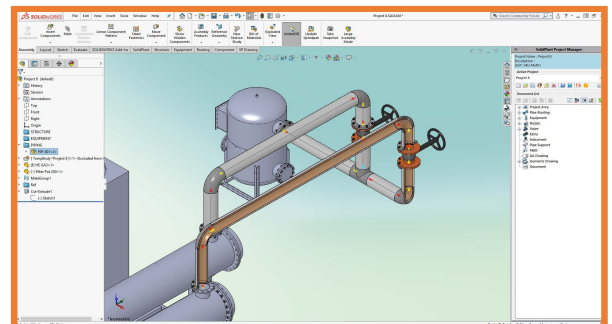
- **New User Interface**

In this release, SolidPlant introduces a revamped user interface. To optimize **user-friendliness** and **recognizability**, we have styled our user interface in such a way that it is now fully in line with that of SolidWorks. SolidWorks users will feel even more familiar with SolidPlant, as the interface is now so similar to the platform they know best.



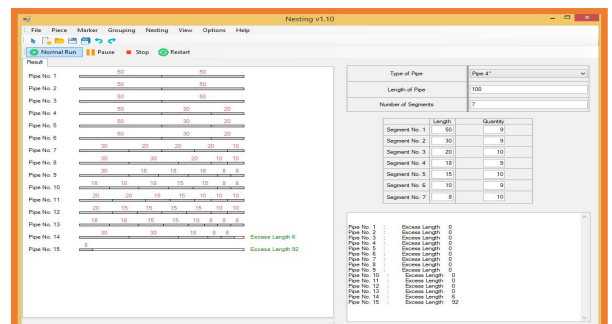
- **Jacketed Piping**

SolidPlant 2018 gives the user the possibility to use **jacketed pipes**. Jacketed piping is commonly used to convey very viscous process fluids in an inner pipe, heated by steam/hot water/hot oil or other heating medium between the jacket and core pipe. **With this feature, users will have more freedom to design piping systems for the most diverse kinds of projects.**



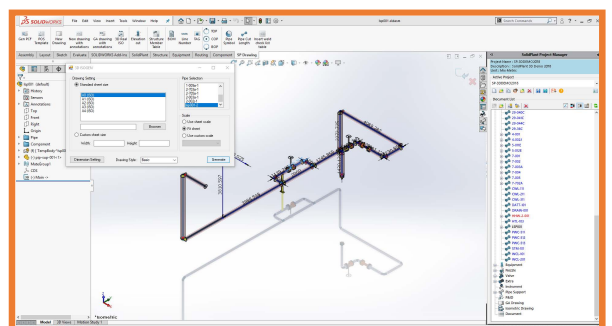
- **Bar Nesting**

In this year's version, SolidPlant includes a useful tool for **bar nesting**. The pipe cut list can be imported into the nesting tool, which will optimize the cut of the stocks into the desired lengths. **This procedure will minimize the waste of materials and thus reduce costs.**



- **3D Real Isometric**

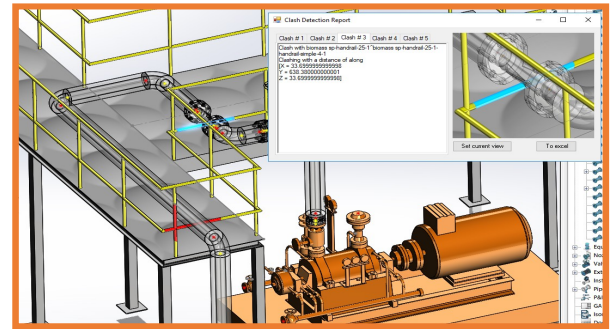
Beside the industry standard isometric drawings by Isogen that is already included in the software, SolidPlant 2018 additionally offers the possibility to generate **3D isometric drawings**. **More realistic looking drawings with SolidPlant 3D 2018**





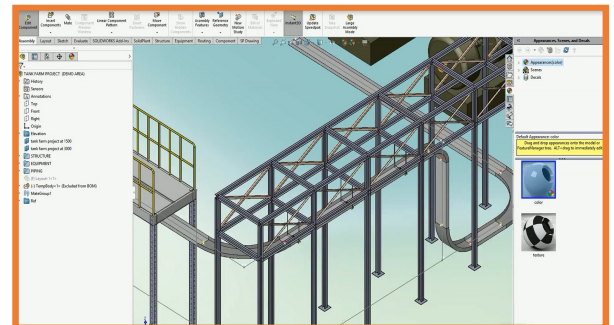
- **Clash Detection**

In SolidPlant 2018 a new feature is added that will further **reduce the number of mistakes in any project**. The user can apply **clash detection** to an entire pipe line in two different modes: **soft clash detection** and **hard clash detection**. Users can apply soft clash detection to determine the working space around a specific pipe line to make sure that there is enough room for service and maintenance. Hard clash detection can be used to check if a specific pipe line collides with others objects in the plant. **Fewer mistakes with SolidPlant 2018**



- **CableTray with Specification**

In SolidPlant 2018 the **cable tray feature** has been upgraded. Now, the user can add a specification for the cable trays. **This increases accuracy and practicality when designing cable trays in a project.**



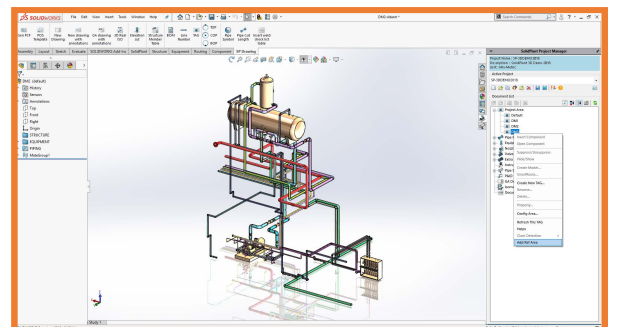
- **Large Design Review Mode**

In SolidPlant 2018 the user has the possibility to **review the project quickly and easily** without having to worry about loading time. In this mode, the focus will lie on the graphics of the project, disabling the underlying database, making for a smooth and quick way to review and present a project. **More flexibility and better performance with SolidPlant 3D 2018.**



- **Area Mode**

SolidPlant 2018 has increased the **speed of the design process by introducing Area Mode**. The user can specify a certain area within the project in which the design tasks take place. Outside this area, certain features will be turned off, **putting less strain on the operating system and, thus improving performance.**





New Enhancements in SolidPlant 3D 2018

Project Management

- ❖ The input of dimensions in SolidPlant 2018's structural and equipment templates has been restyled to be in uniform with SolidWorks
- ❖ **BOM enhancements:**
 - filter
 - group by length of pipe
 - show all components

Piping

- ❖ **Tapport** : SolidPlant 2018 further increases the variety of pipe components by adding tap ports into the list.

PDM Lite

SolidPlant 2018 gives the user more flexibility with **PDM Lite** as a stand-alone application, without the need of SolidWorks PDM. PDM Lite offers new features to increase overall user friendliness. It is now possible to store the 'Vault' either inside or outside the database, allowing for more flexibility when choosing a project's location.

