



SolidWorks® PDM Professional Integration for SAP®

XPLM Integration Platform



The XPLM Integration Platform is an SAP certified solution and provides, as the leading SolidWorks PDM Professional integration flexible deployment options to support your development processes optimally. The integration offers SolidWorks PDM Professional users an effective and intuitive integration with their SAP ERP system.

Assembly Info

Comments

Assy Number: DS-ASM-987654 Revision:

Description: Dual Speaker (Mountable)

Doc Number: Weight:

Created By: Admin Date: 2007-09-26

Vendor: Cost: \$15.93

Project Name:

Project Number:

SAP Documentnumber: 000000000000000000000000979

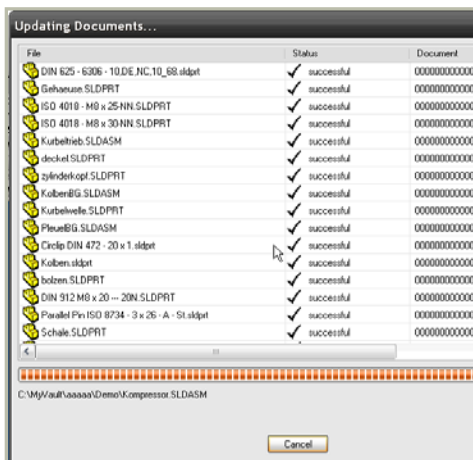
SAP Documenttype: DRW

SAP Documentpart: 000

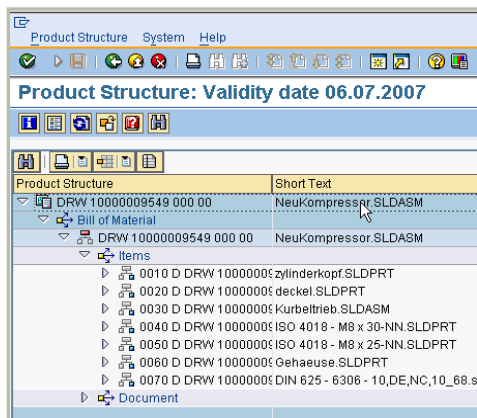
SAP Documentversion: 00

SAP Material: 000000000000000000002202

XPLM provides an intuitive integration between SolidWorks PDM Professional and SAP.



SolidWorks parts, Bills of Materials and related documents can be uploaded easily to SAP ERP.



Uploaded objects are created automatically within your SAP ERP system.

A good integration between enterprise Product Data Management (PDM) systems, CAD applications and Product Lifecycle Management (PLM) systems is a prerequisite to support efficient engineering processes and to drive innovation forward. This has never been more important, as now, as many different design and engineering teams must collaborate across different enterprises and supply chains. The correct design data and related manufacturing and supply chain data must be available at all times. Designers and engineers can no longer work separately from the rest of the company.

XPLM has leveraged their 25 years' experience in building effective CAD, PLM/ERP integrations to offer a next generation solution for SolidWorks PDM Professional and SAP ERP.

SolidWorks PDM Professional Integration for SAP

Data and structures of both SolidWorks PDM Professional and SAP ERP are integrated providing the ability for bi-directional exchange of documents, CAD files, BOMs, parts (material masters), classification, item status and more. SolidWorks PDM Professional users do not need to access SAP ERP interfaces, but can perform all integration activities using the menus and data cards, thus increasing user adoption and satisfaction. Robust customization capabilities are provided outside the SAP environment, reducing support and maintenance costs.

Features

User interface integration in SolidWorks PDM Professional

- › Toolbar, System Menu, Context Menu, Data Cards

Workflow Integration (Triggered by any PDM Prof. event)

- › Status transition, Checkin/out, and other customer defined events

Integration Functionality – Documents Update

- › Bi-directional exchange of metadata and classification
- › Document structures
- › Document status
- › File Check-in/out (including conversion to neutral file format)
- › Integration of MS-Office and PDF documents

Integration Functionality – BOM/ Material/Item update

- › Bi-directional exchange of metadata and classification
- › Support for PDMWE/SolidWorks configurations



XPLM Integration Platform Features

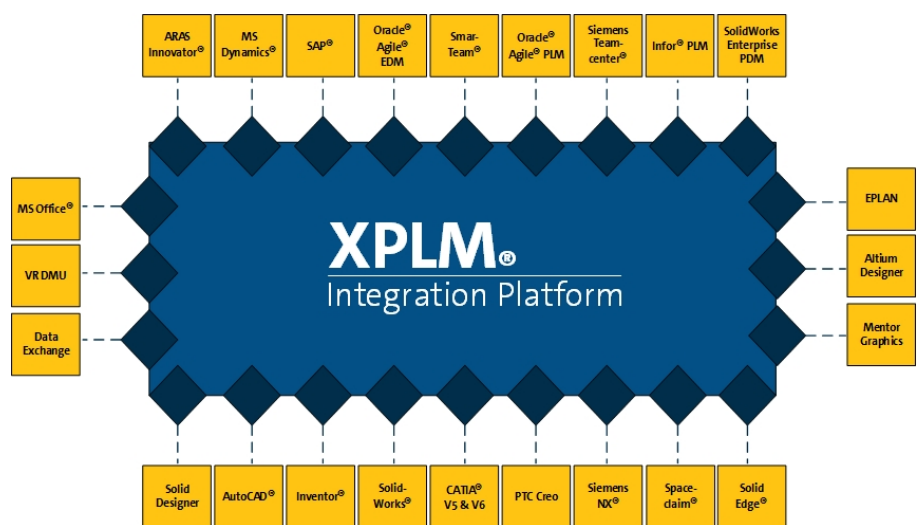
- › Dialogs and features can be enhanced and configured individually for users
- › XPLM Integration platform can access multiple PLM and SAP sites in parallel
- › Batch processor enables file conversions and bulk transfer operations
- › Flexible XML configuration of data mapping and process parameters

Deep integration with SAP PLM objects and structures:

- › SAP Document and File Management, Material Master and BOM, Classification, Change and Release Management
- › Linking to documents
- › Production and order BOM support

Customization Capabilities

- › XML configuration
- › Customer enhancements using Visual Basic



System Requirements:

SAP: SAP ERP 4.7 /
SAP ECC 6.0 or later
PDM Professional: 2014 – 2016



The XPLM Integration Platform provides high quality, state-of-the-art CAD and PDM connectors. The XPLM Integration Platform supports integration with Microsoft Office, PDM/PLM, CAD, ERP, VR/DMU, ECAD and Data Exchange applications.

XPLM Solution is a Certified Service Partner providing highly qualified implementation experts with focused CAD/PLM skills and experience to the engineering community. This is the highest level of accreditation a service partner can achieve in cooperation with SolidWorks. Since January 2012 the SAP PDM Professional integration is a SolidWorks Certified Gold Product.

SAP® Certified
Powered by SAP NetWeaver®



The XPLM Integration Platform is ready for SAP NetWeaver. This gives you the opportunity to take advantage of the latest service-oriented technologies and business platforms offered by SAP.

XPLM is an official SAP Software Partner providing superior CAD and PLM integration solutions for SAP systems.

Headquarters

XPLM Solution GmbH
Altmarkt-Galerie Dresden, Altmarkt 25
01067 Dresden, Germany

Office +49 351 82658-0
Fax +49 351 82658-88
Email : marketing@xplm.com

Office USA

XPLM Solution, Inc.
255 Park Avenue, Suite 703
Worcester, MA 01609 USA

Office +1 508 753-7500
Fax +1 508 753-7578
Email : marketing@xplm.com