

INSTALLATION GUIDE:

Student Engineering Kit, Student Design Kit, and Student Edition

Three types of Student Products

- 1. Student Design Kit (SDK):**

If you have obtained a SDK-ID from your local reseller then you can go to www.SOLIDWORKS.com/SDK and fill out the form shown below to start the download process. You will receive your serial number via email. Note: Please check your junk mail if you do not see it within an hour of submitting the form.
- 2. Student Engineering Kit (SEK):**

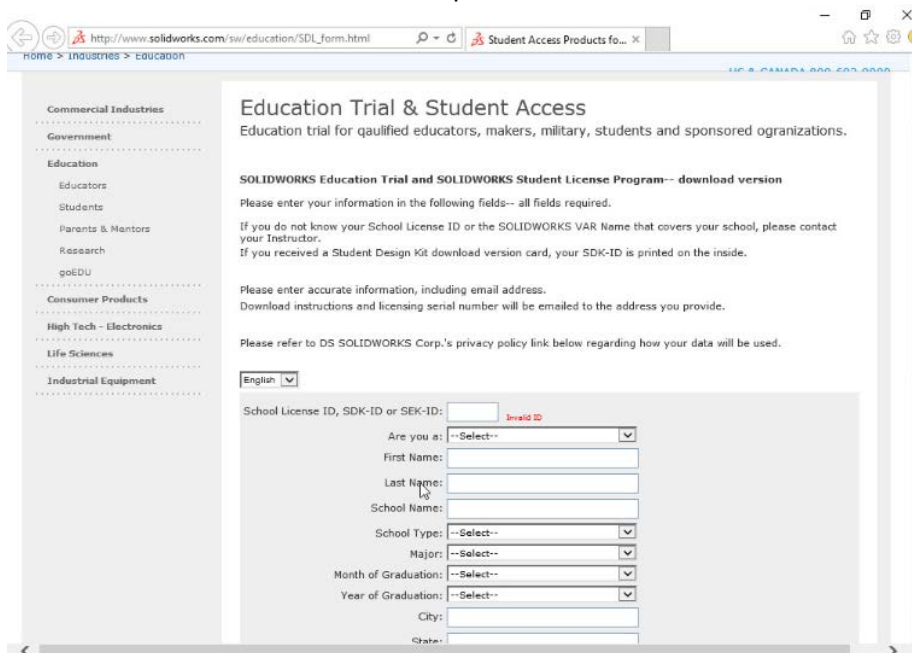
If your school is eligible then they should have received this serial number as well as an SEK-ID from your Local reseller. Once you have obtained both of these, you can go to www.SOLIDWORKS.com/SEK and fill out the form shown below to start the download process.
- 3. Student Edition (SE):**

These licenses can be purchased online through a Local Reseller or the SOLIDWORKS Student Store at: www.solidworks.com/studentstore. If you requested an online download instead of the DVDs then you will receive installation instructions via email.

Installation Steps

1. Insert the first DVD into your computer and run the setup.exe file.

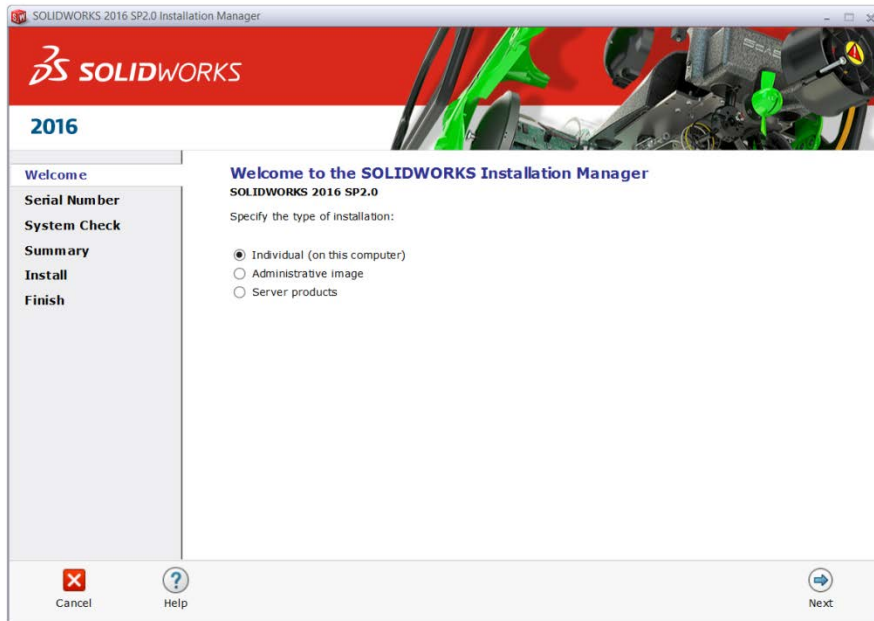
If you do not have a DVD or a disk drive, go to www.SOLIDWORKS.com/sek and request a download of the Installation Manager by completing the form below. You must have a School License ID, SDK-ID or SEK-ID to complete the form.



The screenshot shows a web browser window displaying the 'Education Trial & Student Access' form. The browser address bar shows 'http://www.solidworks.com/sw/education/SDL_form.html'. The page title is 'Education Trial & Student Access' with the subtitle 'Education trial for qualified educators, makers, military, students and sponsored organizations.' The form includes instructions: 'Please enter your information in the following fields-- all fields required.' and 'Please enter accurate information, including email address. Download instructions and licensing serial number will be emailed to the address you provide.' The form fields include: 'School License ID, SDK-ID or SEK-ID' (with a red 'Invalid ID' error message), 'Are you a:' (dropdown menu), 'First Name', 'Last Name', 'School Name', 'School Type' (dropdown menu), 'Major' (dropdown menu), 'Month of Graduation' (dropdown menu), 'Year of Graduation' (dropdown menu), 'City', and 'State'.

2. Once the Installation Manager is running, select the option "Individual (on this computer)" and click the "next" arrow.

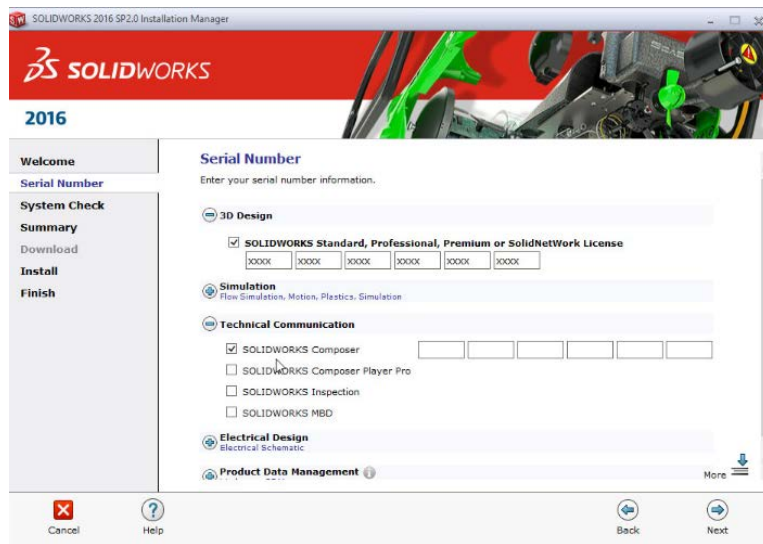
INSTALLATION GUIDE: Student Engineering Kit, Student Design Kit, and Student Edition



3. Input serial numbers of the products that you want to install.
 - a. SOLIDWORKS Serial Number for Student Engineer Kits and Student Editions includes the following products:
 - i. SOLIDWORKS Premium (this includes Workgroup PDM)
 - ii. SOLIDWORKS Simulation Premium
 - iii. SOLIDWORKS Flow Simulation
 - iv. SOLIDWORKS Motion
 - v. SOLDIWORKS Plastics
 - vi. SOLIDWORKS Sustainability
 - vii. SOLIDWORKS Electrical Professional
 - viii. SOLIDWORKS Model Based Definition
 - Note: Student Design Kit only include SOLIDWORKS Standard.
 - b. SOLIDWORKS Composer Serial Number only Installs Composer. Please note only schools that have Student Access will receive a separate serial number for this product.
 - c. You do not need to put the SOLIDWORKS Serial Number separately for Electrical or any other product.

4. Click the “next” arrow to continue.

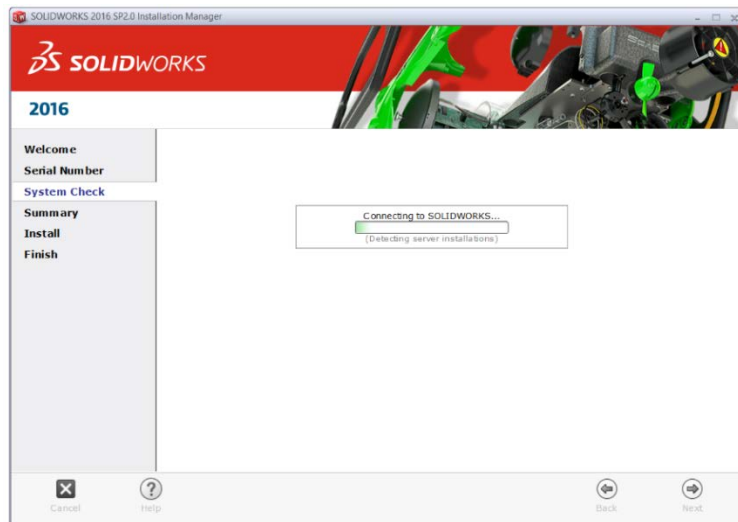
INSTALLATION GUIDE: Student Engineering Kit, Student Design Kit, and Student Edition



5. If you want to install all the products then click next arrow, otherwise click “product selection”.

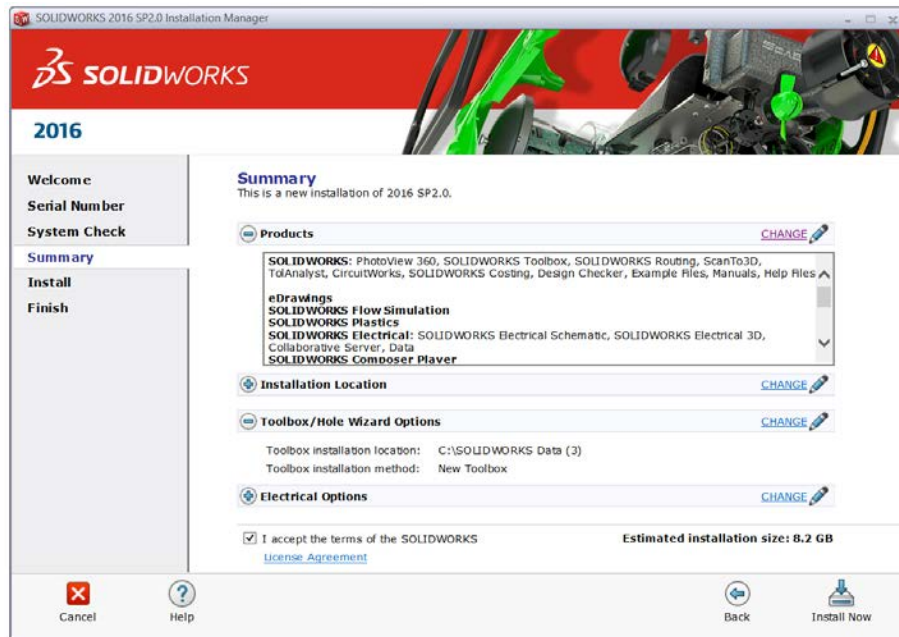
Note: If you have already installed Workgroup PDM Vault and want this computer to access the vault then you will have to click “product selection” and check Workgroup PDM.

6. If you clicked “product selection”, this will take you to another screen where you can select and de-select products. You can only select products that your serial number gives you access to.
7. After selecting the products you would like to install please click next.
8. Next, the Installation Manager will check your system to make sure it can handle the SOLIDWORKS products you are trying to install. If something is amiss, you will be notified. This process may take several minutes.

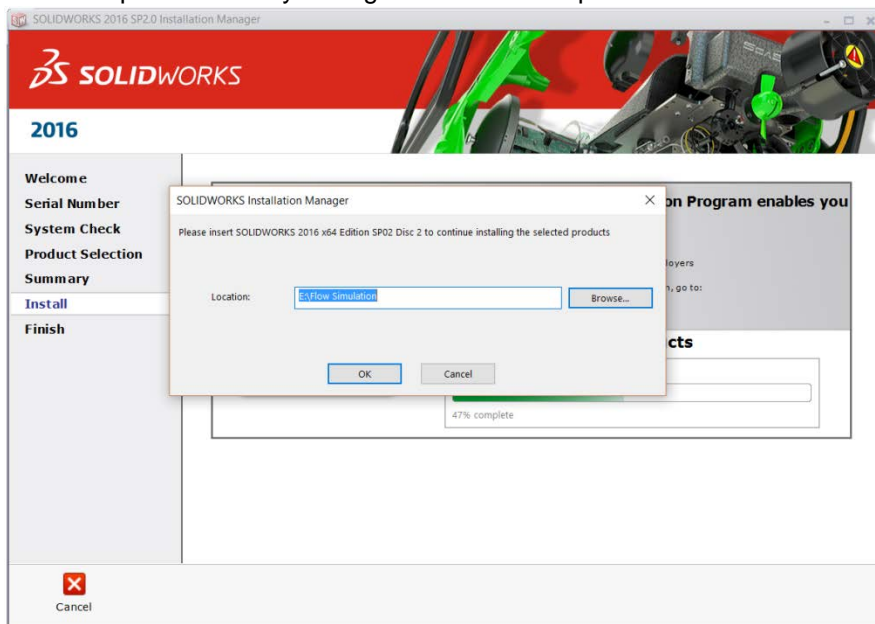


INSTALLATION GUIDE: Student Engineering Kit, Student Design Kit, and Student Edition

9. Once your system has been checked, you will be taken to a summary screen displaying all of the products you will be installing. Check the box marking that you accept our terms and conditions and click install.



10. If you are installing **without** the DVDs, SOLIDWORKS will first need to download all the data and then install. This could take some time. If you are using the DVDs, you will be asked to switch to the second DVD part of the way through the installation process.



11. Once the installation is done, click "finish" and you will be able to use your SOLIDWORKS products.

INSTALLATION GUIDE:
Student Engineering Kit, Student Design Kit, and Student Edition